

L614.62  
1



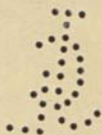
# Kent County Crematorium

NEW COURT WOOD  
CHARING  
KENT

Opened 15th June, 1936

by

EDWARD HARDY, ESQ., J.P.  
Chairman of the Kent County Council



# KENT COUNTY CREMATORIUM.

LIMITED

---

## Directors:

Ald. JAMES HILLIER FRENCH, J.P., St. Margaret's, Maidstone (*Chairman*)  
WRIGHT HUNT, J.P., Wilton Lodge, New Dover Road, Canterbury.  
ALFRED CHARLES LENEY, J.P., The Garden House, Saltwood, Kent.  
GEORGE ALFRED NOBLE, F.C.I.S., 23, Nottingham Place, London, W.1.  
JOHN OLBY, C.C., 36, Hollicondane Road, Ramsgate.  
MURRAY NEWTON PHELPS, LL.B., "Hodges," Five Ashes, Sussex.  
Sir LESLIE PROBYN, K.C.M.G., J.P., "Seaholme," The Riviea, Folkestone.

## Medical Referee:

E. L. MARTYN LOBB, M.S., M.B., F.R.C.S., "Draycott," Maidstone.

## Deputy Medical Referee:

C. PYE OLIVER, jun., M.B., B.Ch., M.R.C.S.,  
"Hemsley," Terrace Road, Maidstone.

## Registered Office:

50a KING STREET, MAIDSTONE. Telephone 4162.

Secretary: JAMES S. FRENCH.

Registrar: Miss L. K. LANE.

## Auditors:

Messrs. LARKING & LARKING,  
Maidstone, Norwich, London, Canterbury, Wisbech, etc., etc.

## Superintendent:

Mr. H. KEEBLE, The Crematorium, Charing. Telephone 143.

## MEMORANDA RELATIVE TO THE KENT COUNTY CREMATORIUM

---

**SITUATION**—The Crematorium has been erected amid beautiful sylvan surroundings in the historic New Court Wood on the main London-Folkestone Road, half a mile from Charing Station, 48 miles from London, 13 from Maidstone, 5 from Ashford and within easy motoring distance of Canterbury, Tunbridge Wells and the coastal towns of Kent and Sussex.

The area of the grounds is about 16 acres.

The Buildings, which were designed by Mr. J. L. Seaton Dahl, F.R.I.B.A., have most attractive elevations and include an entrance vestibule, with a vestry on one side and a waiting room, lavatories, etc., on the other. Leading from the vestibule is the fine lofty Chapel, about 45 feet long by 25 feet wide and beyond, an ante room, committal chamber and furnace room.

At the vestibule end of the chapel is a spacious gallery in which an organ and additional seats have been installed.

On either side of the main entrance extend semi-circular cloisters at the extreme ends of which are a Columbarium and the Chapelle Ardente. Two handsome Recordias for memorial tablets have been erected in the cloisters.

The committal chamber has been fitted with an Askam's latest and most efficient gas incinerator.

The main entrance Lodge is a most pleasing and picturesque feature. It is occupied by the Superintendent, Mr. H. Keeble, for many years Asst. Superintendent at Woking, and contains the office and board room.

The natural beauty of the grounds has been considerably enhanced by the formation of walks, flower beds, a pond and the planting of forest and ornamental trees, flowering shrubs, etc.

The Crematorium is open to visitors by application to the Superintendent on week days (Bank Holidays excepted) from 9 a.m. to 5 p.m., unless a cremation is proceeding or about to take place, and on Sundays from April to October (inclusive) between the hours of 3 p.m. and 6 p.m.



Interior of Chapel



Entrance Gates



Front Elevation



The Lily Pond



## SCALE OF CHARGES.

£ s. d.

For Cremation of an adult, including all attendance after the coffin is placed on the Catafalque by the undertaker ... .. 6 6 0  
 (Children at reduced charges according to age).

For Cremation in cases where deceased is insured under the N.H.L., a dependent on an insured person, or a non-paying inmate of a Public Hospital or Institution, a reduced fee will be charged according to circumstances, not exceeding ... .. 5 5 0

*Life Members of the Cremation Society are cremated at death without charge.*

### Extra Charges (optional) :—

|  |         |
|--|---------|
| Fee for reading burial service (payable to officiating Minister) ... ..                  | 10 6    |
| Use of Organ, with Organist and Blower ... ..  | 1 11 6  |
| Choir (according to number of voices) ... from   | 2 2 0   |
| Plain urn or reduction of ashes and dispersal in the garden ... ..                       | 1 0 0   |
| Decoration of Chapel with palms and flowers from   | 3 3 0   |
| Freehold Niche in Columbarium (according to size and position) ... .. from               | 8 8 0   |
| Tablet space in the Memorial Cloister (according to size of tablet selected) ... .. from | 10 10 0 |

Enquiries addressed to the Secretary, 50a King Street, Maidstone, will receive immediate attention. Undertakers are furnished with a supply of requisite forms and full particulars regarding Cremations, etc., at Charing.

# KENT'S CREMATORIUM

BY THE

REV. D. R. FOTHERINGHAM, *Chaplain*

This is written from one of the loveliest gardens in all the Garden of England— Rose plot, fringed pool, ferned grot.

Before me is a riot of colour from our glorious roses. A little to the right is our fringed pool. Beneath the woodland trees the ferns are growing. Two years ago it was all woodland ; and as far as possible the woods have been preserved in all their glory. The pheasants nest here as before—with no fear of the autumn guns. In early spring the carpet of blue-bells rivals the sky itself.

As a matter of fact, I am sitting in the Chaplain's Vestry at the Kent County Crematorium. Everything possible has been done to preserve the natural beauty of the spot, and to banish all thought or suggestion of the horror of death. We can never hope to escape altogether from the sadness of separation, but surely we need not make death horrible. *Manibus date lilia plenis.*

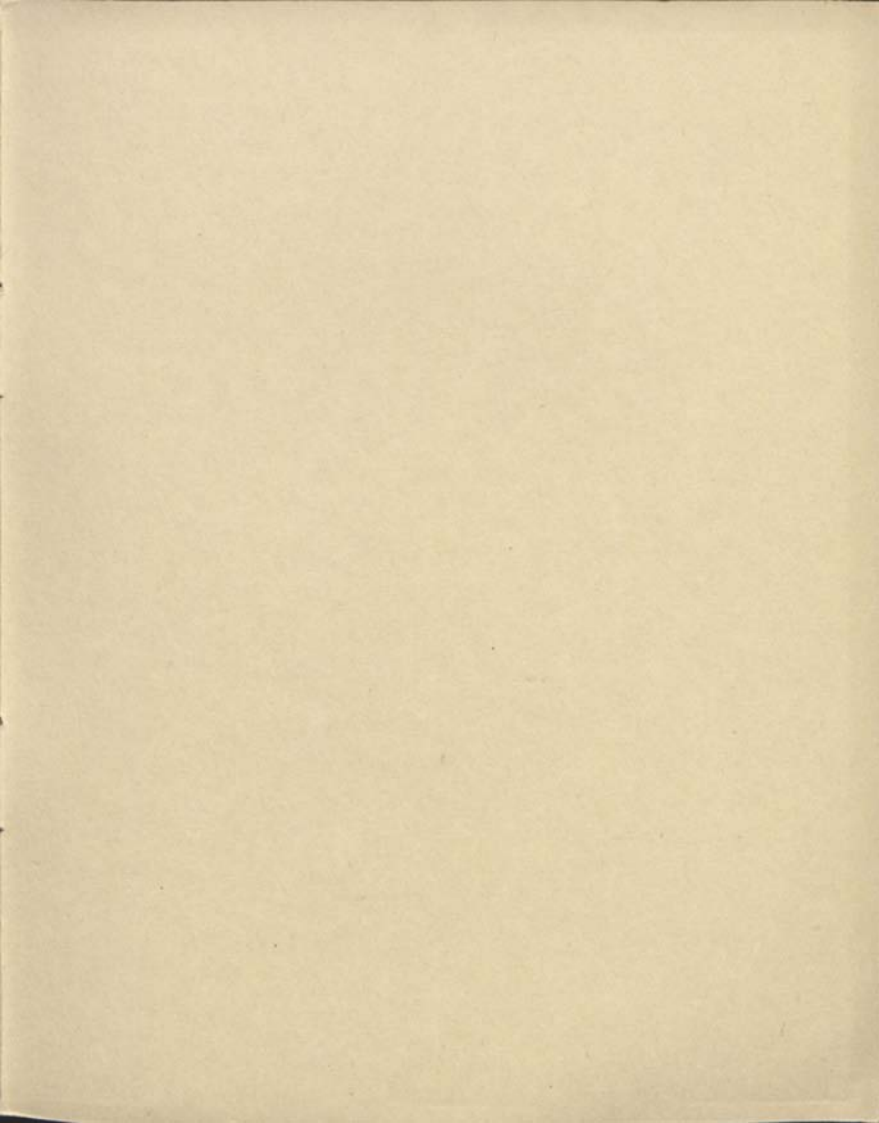
The beauty of the springing flowers, the joy of the singing birds are meant to suggest to us thoughts of life and resurrection rather than of the gloomy terrors of the tomb. No tombstone rears its threatening head to mar the joy of this garden.

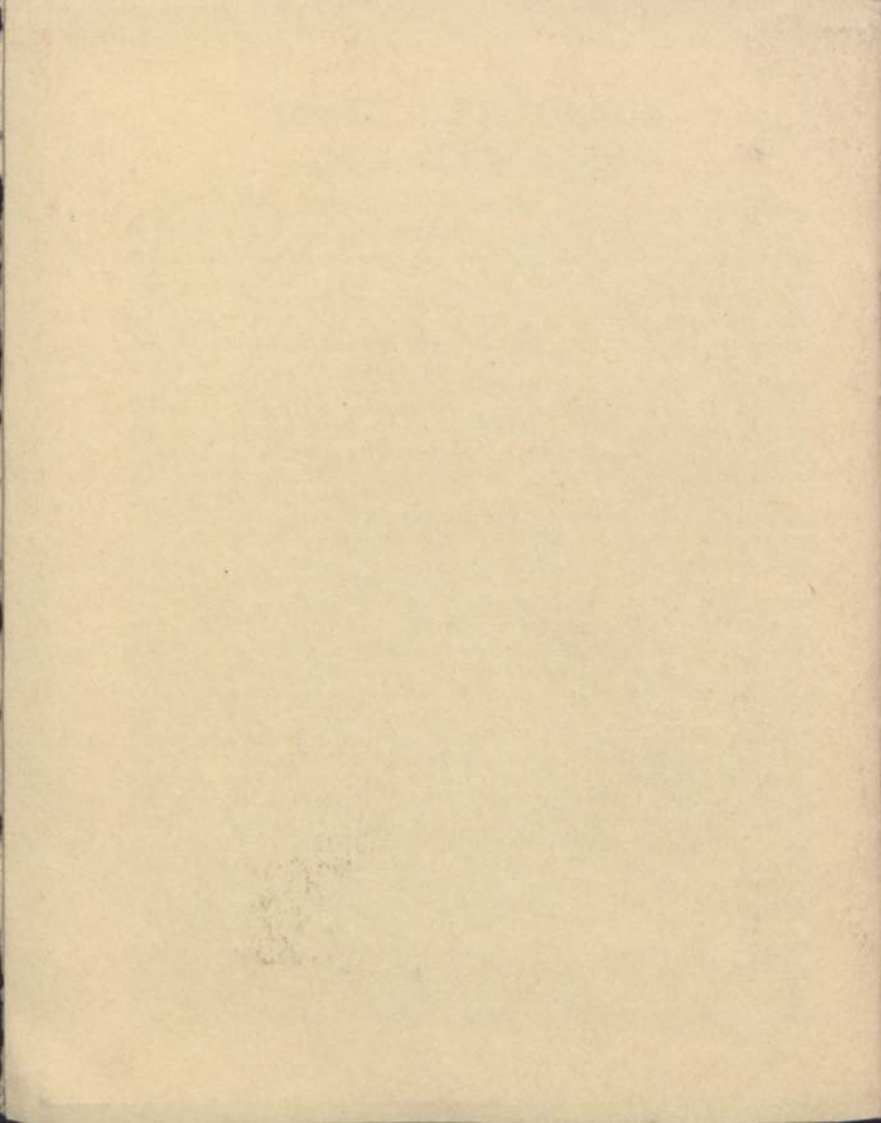
The body is a Temple of the Holy Ghost. It was taken from the dust, and to dust it returns. But need it be doomed to the unspeakable horror of corruption? Surely in an age when we honour our living bodies by keeping them clean and pure, we may honour the bodies of our beloved dead by committing them not to the filth of corruption, but to the cleansing and purifying fire.

The Crematorium has been working a little more than a year, and cremations now average about twenty a month. I speak from experience when I say that the mourners who attend are all struck by the simplicity and reverence of the service, and by the beauty of the carefully-tended chapel. They appreciate at once the difference between our Garden of Rest, with its unsullied beauty, and the ordinary cemetery with its litter of stones and monuments. Sometimes the ashes are taken away in an urn or casket to be interred elsewhere ; but for my part I would wish rather for the open air on the heath, and the pure wind of Heaven to do with the dust as it will.

It is impossible to take too much care in arranging the reverent disposal of our mortal remains, for it is all a part of the Ministry of Consolation. But of all who have ever attended a service of cremation, there are few indeed who would wish ever to return to ordinary burial.

D. R. F.







County Borough of Blackpool.

---

BLACKPOOL CREMATORIUM,  
CARLETON CEMETERY.



# REGULATIONS

and Fees or Charges for the  
cremation of human remains.

---

D. L. HARBOTTLE, LL.B.,  
*Town Clerk and  
Clerk to the Burial Board.*

18th September, 1935.





County Borough of Blackpool.

---

BLACKPOOL CREMATORIUM,  
CARLETON CEMETERY.



# REGULATIONS

and Fees or Charges for the  
cremation of human remains.

---

D. L. HARBOTTLE, LL.B.,  
*Town Clerk and*  
*Clerk to the Burial Board.*

18th September, 1935.

Report of the

BRITISH CHEMISTS  
ASSOCIATION

REGULATIONS

for the  
Control of the

1917

London



# COUNTY BOROUGH OF BLACKPOOL.

---

## Blackpool Crematorium, Carleton Cemetery.

---

# REGULATIONS

and Fees or Charges for the  
cremation of human remains.

---

Cremations must be conducted strictly in accordance with the Regulations made by the Secretary of State for the Home Department dated October 28th, 1930, under Section 7 of the Cremation Act, 1902, and Section 10 of the Births and Deaths Registration Act, 1926.

1. Application for Cremation must be made to the Registrar of the Cemetery at Layton between the hours of 10 a.m. and 4 p.m. (12 noon on Saturdays) at least 24 hours before the proposed hour of cremation.

Cremations may take place between the hours of 10 a.m. and 3 p.m. Monday to Friday, and 10-30 a.m. only on Saturday. (Sunday, Christmas Day and Good Friday excepted.)

The Instructions to Undertakers must be strictly adhered to. (See Instructions, page 7.)

2. The application on Form A must be signed and the statutory declaration made by an executor or by the nearest surviving relative of the deceased, or, if made by any other person must show a satisfactory reason why the application is not made by an executor or by the nearest surviving relative and be accompanied by a duly certified copy of the Registration of Death on one of the forms provided by the Registrar-General for production in case of burial, except in cases where an inquest has been held, when a certificate given by a Coroner in Form E must be produced.

3. No cremation shall be allowed to take place unless—

(a) A certificate in Form B be given by a registered medical practitioner who has attended the deceased during his last illness and who can certify definitely as to the cause of death, and a confirmatory medical certificate in Form C be given by another medical practitioner or

(b) A post-mortem examination has been made by a medical practitioner expert in pathology appointed by the Cremation Authority (or in case of emergency appointed by the Medical Referee), and a certificate given by him in Form D; or

- (c) An inquest has been held and a certificate has been given by the Coroner in Form E.

No cremation shall take place except on the written authority of the Medical Referee.

4. The Medical Referee will, before allowing the cremation, examine the application and certificates, and ascertain that they are such as are required by these regulations, and that adequate enquiry has been made by the persons giving the certificate. He may make any enquiry with regard to the application and certificates that he may think necessary.

5. If the Medical Referee finds any suspicious circumstance, whether revealed in the certificates or otherwise, coming to his knowledge, he shall decline to allow the cremation, unless an inquest be held and a certificate be given by the Coroner in Form E.

Provided that if in any case to which the foregoing rule applies it is shown to the satisfaction of the Secretary of State that by reason of any special circumstances it is impracticable or undesirable that an inquest shall be held, he may by order under his hand authorise the Medical Referee to allow the cremation without an inquest being held and certificate given by the Coroner.

6. If a Coroner has given notice that he intends to hold an inquest on the body, he shall not allow the cremation to take place until the inquest has been held.

7. The Medical Referee may in any case decline to allow the cremation without stating any reason.

8. No human remains shall be cremated which have not been identified.

9. The foregoing regulations 2 to 5 shall not apply to the cremation of the remains of a deceased person who has already been buried for not less than one year. Such remains may be cremated, subject to such conditions as the Secretary of State may impose in the exhumation licence granted by him or otherwise; and any such cremation in which those conditions are not observed shall be deemed a contravention of these regulations.

10. Notwithstanding the foregoing regulations, the Medical Referee may permit the cremation of the remains of a still-born child if it be certified to be still-born by a registered medical practitioner after examination of the body, and if the Medical Referee, after such enquiries as he may think necessary, be satisfied that it was still-born and that there is no reason for further examination.

11. In the case of any person dying of plague, cholera, or yellow fever on board ship or in a hospital or temporary place of reception of the sick provided by a Port or other local authority under the Public Health Acts or by a Hospital Committee under the Isolation Hospital Acts, the Medical Referee, if satisfied as to the cause of death

may dispense with any of the requirements of these regulations.

12. In the case of the remains of a person who has died in any place out of England the Medical Referee may accept a declaration containing the particulars prescribed in Form A if it be made before any person having authority in that place to administer an oath or take a declaration; and he may accept certificates in Forms B, C and D, if they be signed by any medical practitioners who are shown to his satisfaction to possess qualifications substantially equivalent to those prescribed in the case of each certificate by these regulations.

In any such case the Secretary of State, if satisfied that the case is one in which cremation may properly take place, may by order under his hand authorise the Medical Referee to allow the cremation without the production of a Certificate of Registry of Death, or of Forms B and C.

13. Any Service or Demonstration in connection with a funeral shall be subject in all things to the control of the Registrar of the Cemetery.

14. All persons admitted into the Crematorium shall be subject to the regulations of the Burial Authority, and the Registrar of the Cemetery shall have full power to exclude or remove from the Crematorium any member of the public whom he, in his discretion, may think fit so

to exclude or remove. All persons attending the funeral are expected to leave the building immediately after the conclusion of the ceremony.

15. The public can obtain permission to inspect the building, when no cremation is proceeding, between the hours of 10 a.m. and 4 p.m. Monday to Friday, and 10 a.m. and 12 noon Saturday, on application being made to the Registrar at the Cemetery.

16. The remains will be collected and sealed in a plain urn, unless other instructions are given by the relatives; but, if required, the Burial Authority will be prepared to provide urns of a more elaborate character. Specimens of urns may be seen on application to the Registrar.

17. For the disposal of the remains, the written authority of the applicant for cremation (as per Form A) will be required.

## INSTRUCTIONS TO UNDERTAKERS.

Communications, either personally or by letter, must be made to the Registrar.

Coffins for cremation should be made of some readily combustible wood, such as American white, or thin pine, not more than half-an-inch thick. ENGLISH ELM SHOULD NEVER BE USED. Oak may be used, though it is not recommended, and when it is used the boards should be as thin as possible, and well seasoned and dry, fastened together with wooden pegs.

COFFINS MUST NOT HAVE CROSS PIECES under the sole or on the bottom, as these have to be removed before the coffin can enter the Crematorium; no objection will be taken to strips placed lengthwise to strengthen the bottom of the coffin.

COFFINS MUST NOT BE PAINTED OR VARNISHED, but may be covered with a thin woollen material of white, black, or purple cloth. There is no objection to the coffin being polished.

All brass or metal nails, handles, or ornaments of any kind must be removed from the coffin before it is placed in the incinerating chamber.

No sawdust must on any account be put in the coffin and no pitch must be used for coating the inside.

The Burial Authority will not cremate a body in a lead or iron coffin.

If it is desired A THIN ZINC LINING may be inserted inside the coffin; NO OTHER METAL, HOWEVER, BUT ZINC, WILL UNDER ANY CIRCUMSTANCES BE ALLOWED FOR THE PURPOSE.

The extreme outside dimensions allowed for a coffin are as follows:—

|               |                   |
|---------------|-------------------|
| Length ... .. | 7 feet 6 inches.  |
| Width ... ..  | 2 feet 3 inches.  |
| Depth ... ..  | 1 foot 10 inches. |

The hours of the day during which cremation can take place are, at present, fixed between 10 a.m. and 3 p.m. Monday to Friday, and at 10-30 a.m. only on Saturday, except on Sunday, Christmas Day and Good Friday.

Special arrangements may be made for cremations at other hours.

Undertakers must always provide four men for carrying the coffin into the Crematorium Chapel and depositing it on the Catafalque.

The Registrar is instructed to see that the regulations are strictly observed before allowing the cremation to proceed.



## TABLE OF FEES OR CHARGES.

Table of Fees or Charges, payment of which may be demanded under section 9 of the Cremation Act, 1902, by the Mayor, Aldermen and Burgesses of the Borough of Blackpool acting by the Council for the burning of human remains in the Crematorium provided by the Council at Carleton Cemetery.

For the cremation of the remains of—

|   |        | £ | s. | d. |
|---|--------|---|----|----|
| (a) a still-born child, or of a child whose age at the time of death did not exceed one month | ... .. | 1 | 1  | 0  |
| (b) a person whose age at the time of death exceeded one month but did not exceed 12 years    | ... .. | 2 | 2  | 0  |
| (c) a person whose age at the time of death exceeded 12 years                                 | ... .. | 4 | 4  | 0  |

The Common Seal of the Mayor, Aldermen and Burgesses of the Borough of Blackpool acting by the Council as the Burial Board for the said Borough was hereunto affixed on the 11th day of September, 1935 (pursuant to resolution of the Council), on the 4th day of September, 1935, in the presence of

G. WHITTAKER,  
Mayor,

by

D. L. HARBOTTLE,  
Town Clerk.



The foregoing Table of Fees and Charges under section 9 of the Cremation Act, 1902, is hereby approved by the Minister of Health this eighteenth day of September, 1935.

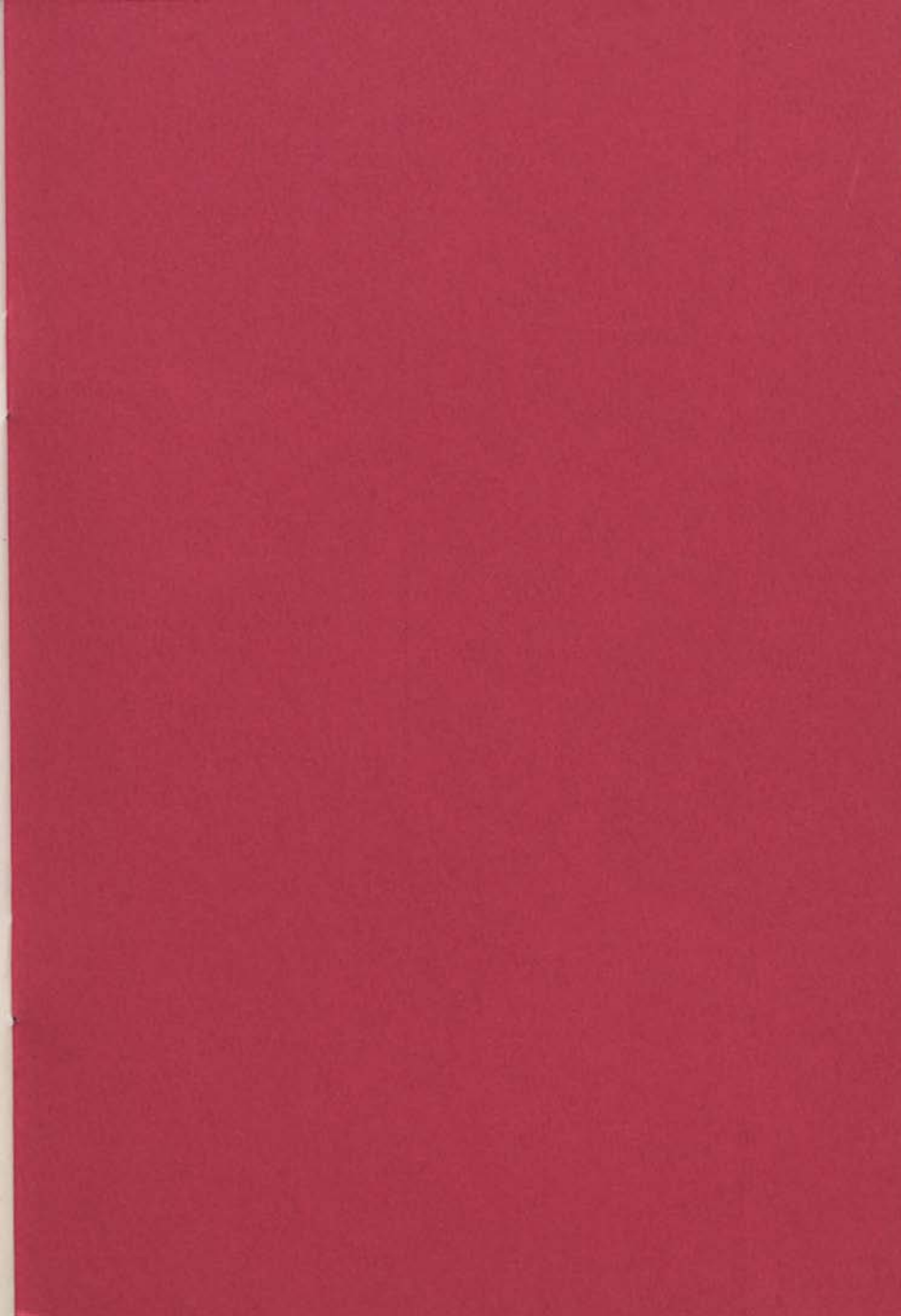
R. J. SIMPSON,  
Assistant Secretary,  
Ministry of Health.



\*Clergy fee in respect of a burial service, before, at, or after cremation ... 7s. 6d.

(Approved by the Secretary of State, 6th January, 1936.)

\* NOTE:—The above fee includes all attendance after the body is placed on the catafalque table by the undertakers, and storage of the remains for a period of one month.



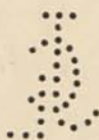


L614, 62  
1

CITY OF BIRMINGHAM  
PARKS & CEMETERIES  
DEPARTMENT

LODGE HILL  
CREMATORIUM

LODGE HILL CEMETERY  
WEOLEY PARK ROAD  
SELLY OAK



CITY OF BIRMINGHAM  
PARKS & CEMETERIES  
DEPARTMENT

*General Manager :* E. S. WHITE

*Head Offices :*

161 CORPORATION STREET  
BIRMINGHAM 4

*Hours :*

Mondays to Fridays . . . . . 9 a.m.—5 p.m.  
Saturdays . . . . . 9 a.m.—12 noon.

*Telephone :* CENTRAL 8332

*Cemetery and Crematorium Registrar :* W. A. E. TONGUE

*Cemetery Office :*

LODGE HILL CEMETERY  
WEOLEY PARK ROAD  
SELLY OAK 29

*Hours :*

Mondays to Saturdays . . . . . 9 a.m.—5 p.m.

*Telephone :* SELLY OAK 0069

*Medical Referee :* P. C. CLOAKE, M.D., F.R.C.P.

*Deputy Medical Referee :* T. L. HARDY, M.A., M.D., F.R.C.P.

*Town Clerk and Clerk to the Burial Board :*

F. H. C. WILTSHIRE  
COUNCIL HOUSE  
BIRMINGHAM 1

## CONTENTS

|  | PAGE |
|--|------|
| FOREWORD . . . . .                         | 3    |
| SITUATION AND DESCRIPTION . . . . .        | 5    |
| INSTRUCTIONS FOR ARRANGING A CREMATION     | 7    |
| FEEES AND CHARGES . . . . .                | 11   |
| REGULATIONS . . . . .                      | 12   |
| EXTRACT FROM CREMATION ACT, 1902 . . . . . | 16   |



## *Foreword*

MUCH has been written and said for many years past on the subject of Cremation, and it is not the purpose of this booklet to enlarge at any length on the advantages of this method of disposal of the dead.

It may be recalled, however, that facilities for cremation have been available in England since 1885, when the Woking Crematorium was established by the Cremation Society of England. The increasing appreciation of the value of cremation is evidenced by the steady increase in the number of Crematoria throughout the British Isles, which totalled thirty-three by the end of 1936, during which year no fewer than 11,289 cremations took place.

There has been a proprietary Crematorium in Birmingham, operated by the Birmingham Crematorium Ltd., since 1903. The Proprietors have done much to stimulate and encourage cremation and this opportunity is taken of acknowledging their service to the public, and also the ready assistance which has been rendered to the Parks Committee in connection with the institution of the Lodge Hill Crematorium.

The existence of this Crematorium, however, does not relieve the City Council of its responsibilities to the public, and it is with this in mind, that a Municipal Crematorium has been provided.

In regard to cremation in general and to this Crematorium in particular, it may be said that in addition to any potential danger that earth burial may possibly impose upon public health, the insistent demand for building sites and the need for the provision of parks and playing fields within the city, has made it increasingly difficult to acquire land either for new cemeteries or the extension of existing cemeteries.

Cremation, it can truly be said, provides the most simple and sanitary solution to this problem without detracting from the sanctity which attaches to the disposal of the dead.

It is well to emphasise that cremation is no more expensive than earth burial. A grave-owner is generally faced with the responsibility of keeping a grave space in a tidy condition, and probably of erecting and maintaining a memorial thereon, whereas except for the small charge made for the disposal of the ashes, no further expense arises after cremation.

The Parks Committee extends an invitation to the public to inspect the facilities now available at Lodge Hill, in the hope that any misconceptions may disappear when the advantages of cremation, as carried out in a well-equipped crematorium, are thoroughly realised.

R. R. GELLING,  
*Chairman, City of Birmingham Parks Committee.*

*28th September, 1937.*

## SITUATION AND DESCRIPTION

The Crematorium is situated within the grounds of Lodge Hill Cemetery, the main entrance of which is at the junction of Gibbins Road, Weoley Avenue, Weoley Park Road and Shenley Fields Road, Selly Oak.

The decision to erect the Crematorium at Lodge Hill Cemetery, which is on the southern side of the city, was made because the Crematorium belonging to the Birmingham Crematorium Ltd., is on the northern side of the city at Perry Barr, and by reason of the fact that it could be conveniently incorporated as a new Chapel which had necessarily to be erected at Lodge Hill to serve a recent extension of this cemetery.

The City Council approved of the principle of a Municipal Crematorium in 1930, but consequent upon financial stringency and measures of economy, it was not until May 1935, that the Parks Committee obtained the Council's sanction to proceed with the erection of the building at a total inclusive cost of £9,000.

Designs were subsequently obtained by the institution of an Architectural competition confined to Birmingham Architects, and an independent Assessor was appointed. Fifteen entries were submitted, and the author of the winning design, Mr. Holland W. Hobbiss, F.R.I.B.A., was appointed the Architect for the building.

The foundation-stone of the Chapel and Crematorium was laid by the then Lord Mayor, Alderman S. J. Grey, J.P., on the 21st July, 1936.

The design of the building is well arranged, small units being grouped compactly round a central rectangular nave. At the west end, on either side of the main entrance lobby, are the Mortuary and the Columbarium, which contains niches for the deposit of urns. Similar grouping is formed at the east end by placing the vestry and waiting-room on each side of the chancel. From the waiting-room, direct access

may be gained to the observation gallery of the incinerating chamber, which forms an extension at the east end of the main block. The nave, which has a decorated ceiling, has a central and two side aisles and seating accommodation for 150 persons.

The Parks Committee gave careful consideration to the type of incinerating furnace to be provided, to ensure the installation of the most efficient of modern equipment, and two "Askam" gas furnaces were eventually chosen. The latest type of mechanical lift has also been installed, by which the coffin is slowly lowered from the catafalque to an intermediate chamber from whence it is conveyed to the incinerating chamber.

Externally the symmetrical design of the building gives a monumental group rising to the central nave which is pleasing to the eye from all aspects. The treatment of the brickwork is simple but carefully studied, and the lay-out of the adjoining ground has been designed to emphasise the beauty of the building.

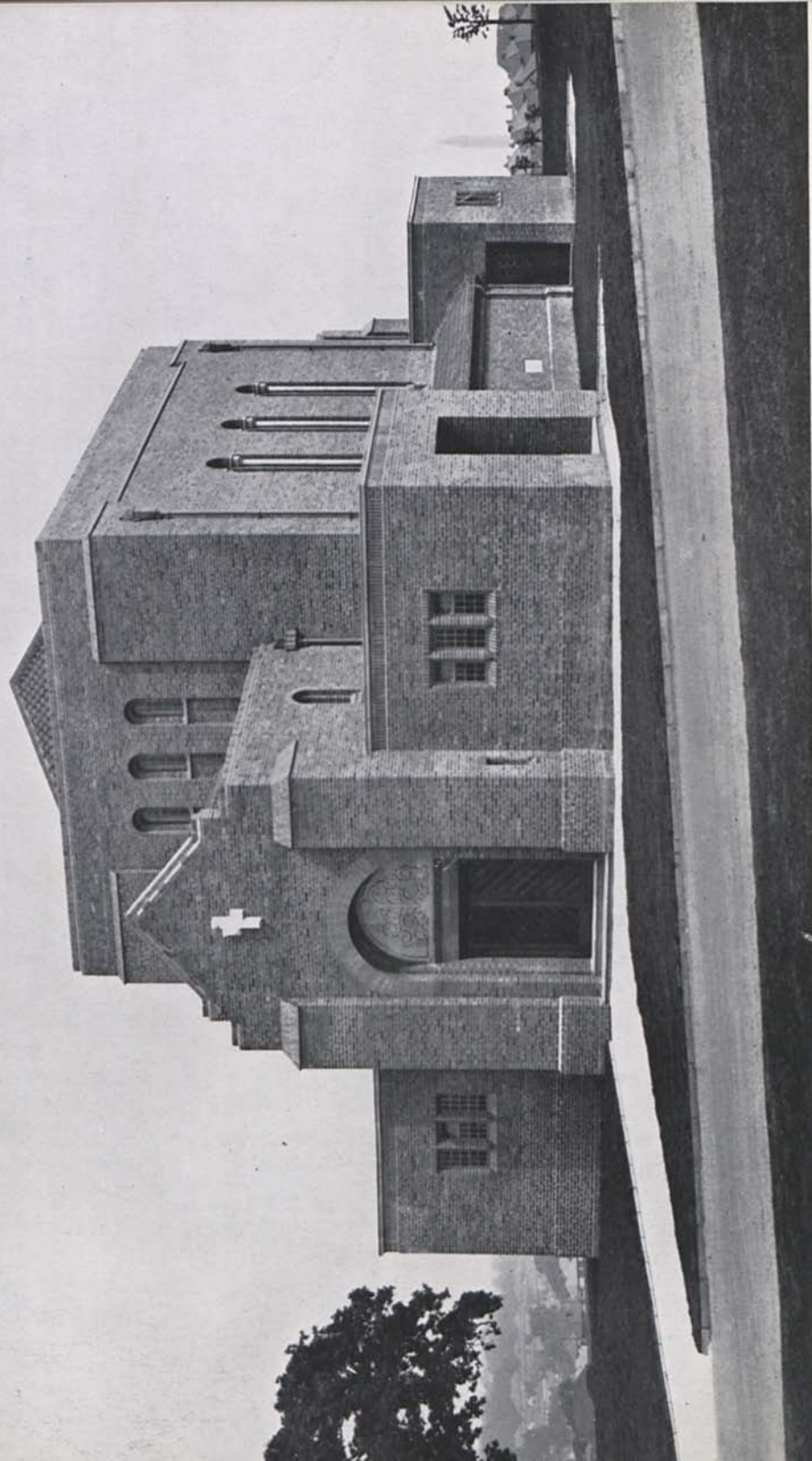
To the north of the Chapel lies the Garden of Rest in which the ashes of the deceased may be reverently dispersed. The scattering of ashes in a special garden has made a strong appeal to public sentiment in recent years, as is evident from the fact that the remains of more than half of those cremated are now dealt with in this way.

The Garden of Rest is situated on the north side and immediately adjoining the Crematorium. The lay-out has been designed to conform with the natural fall in the ground and consists of terraces adorned with yew hedges intersected by a path leading to a spacious lawn.

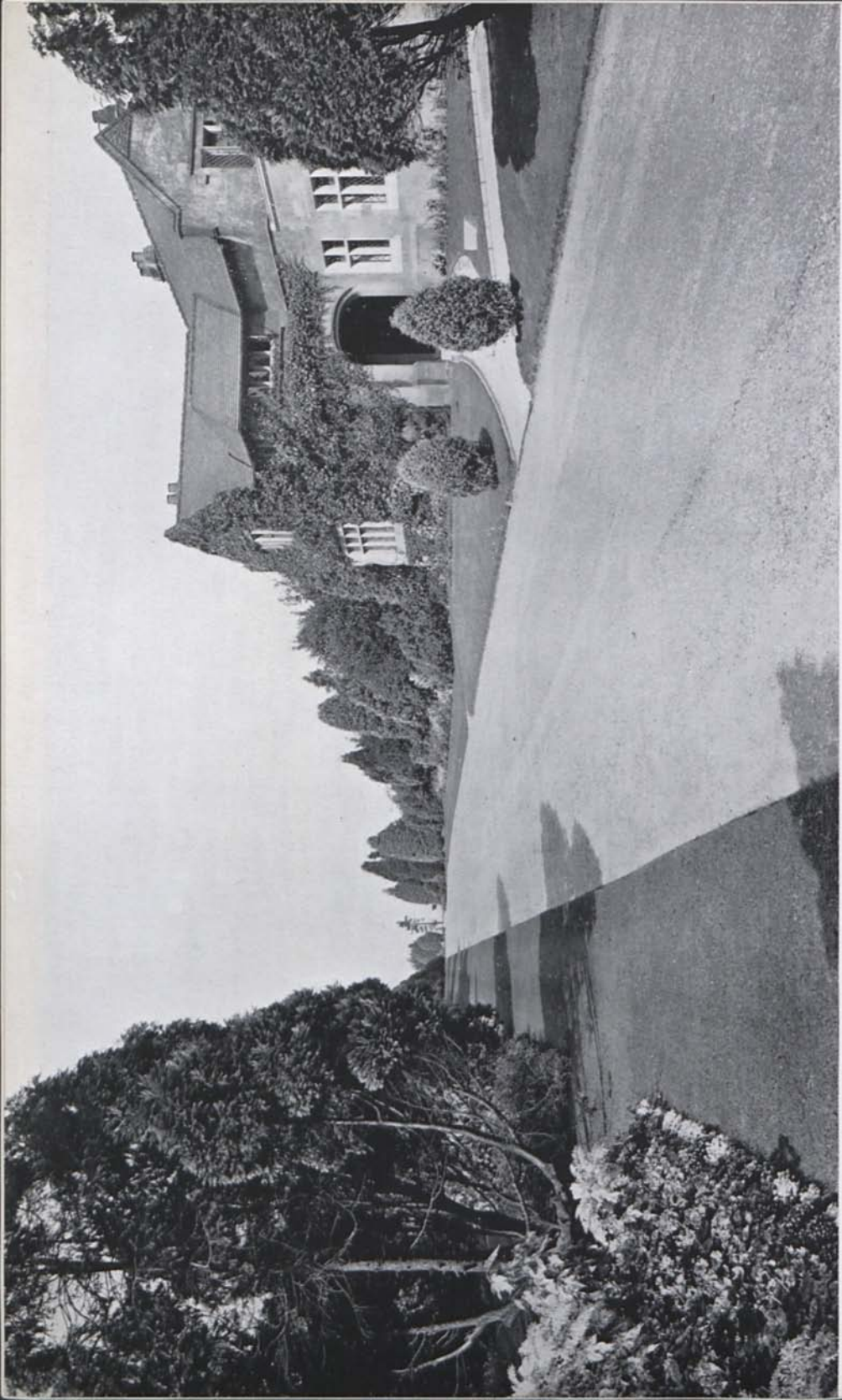
The Garden will be bounded by a hedge, ornamental trees and shrubs, which will give a sense of seclusion and preserve a simple dignity in keeping with its sacred purpose.

Visitors to the Crematorium may choose between the following routes from the city :

Corporation Tram Car (Nos. 69, 70, 71 or 72) to Weoley Park Road.



CHAPEL AND CREMATORIUM



MAIN DRIVE AND OFFICES

Midland Red Omnibus (No. 144) to Weoley Park Road.

Corporation Omnibus (Nos. 20 or 20B) to Cemetery entrance.

At times when the building is not in use, the public will be admitted at the discretion of the Registrar. The Garden of Rest may be visited at any time during the hours at which the cemetery is open. These hours are set out in the Regulations.

## INSTRUCTIONS FOR ARRANGING A CREMATION

In cases where a cremation is required, a Funeral Director who will be conversant with the procedure should be communicated with immediately, and he will arrange the date and time of the funeral. He will also advise as to the type of coffin, which is less elaborate than that used for earth burials, and in consequence less expensive.

Except where a Coroner's Inquiry is to be held, no cremation can be allowed until the representative of the deceased has had the death registered at the office of the Registrar of Births and Deaths and obtained a Certificate for Disposal. When this is done, certain forms are required to be completed, details of which are given below. These may be obtained from either the Funeral Director or the Registrar at Lodge Hill Cemetery, both of whom will give all possible assistance and advice.

Form A is the statutory application for cremation and must be completed and signed by the representative of the deceased, and declared before a Commissioner for Oaths or a Justice of the Peace.

Form B has to be completed by the Medical Practitioner who attended the deceased before death and then handed or sent in a closed envelope to a second Practitioner.

Form C is a Confirmatory Certificate of Form B and has to be completed by the second Medical Practitioner, who must be a Practitioner of not less than five years' standing and neither a relative nor partner of the Doctor completing Form B.

Forms A, B and C must be obtained by the applicant for cremation and these, together with the Certificate for Disposal, must be delivered to the Medical Referee, c/o the Registrar at Lodge Hill Cemetery, Selly Oak, Birmingham 29, not later than 10 a.m. on the day previous to the cremation.

If the Medical Referee is satisfied that the forms submitted to him are in order, he will complete and sign Form F, which constitutes the authority to cremate.

In cases necessitating a Coroner's Inquiry, the Coroner should be informed at the earliest possible time that cremation is desired. A Certificate for Disposal is not issued by the Registrar of Births and Deaths in such cases, and it will be necessary to obtain a Coroner's Order for Cremation on Statutory Form E in lieu thereof. This form is supplied by the Coroner direct and must be submitted to the Medical Referee, together with Form A. Forms B and C are not required in these cases.

If it is desired to cremate the body of a still-born child, Forms A, B and C do not apply, but in their place a written application must be made by a person in a responsible position, who must also submit a certificate given on Form G 1 by the Medical Practitioner who was present at the birth, together with a Certificate of Stillbirth issued by the Registrar of Births and Deaths. Form G 1 can be obtained at the Cemetery office.

If an Inquest has been held following a case of stillbirth, a written application together with the Coroner's Certificate on Form E are all that need be submitted.



The Funeral Director is responsible for the handling of the coffin until it is placed upon the catafalque following the arrival of the funeral cortege at the Chapel. The service (if any) will then commence and the coffin is visible until the Committal sentence is pronounced, during which the coffin is reverently lowered from sight into an ante-chamber. Relatives may arrange for their own Minister to officiate if desired, or alternatively, the Registrar will arrange for a Cemetery Chaplain to conduct the service. A fee of 5s. for the officiating Minister will be charged in either case.

The coffin will rest in the ante-chamber after the Committal until the service comes to an end and no part of the actual cremation is seen or is in any way evident to persons remaining in the Chapel or waiting-room. Inspection of the actual process of incineration is on no account permitted, but if particularly desired, not more than two relatives of the deceased may see the coffin introduced into the incinerating chamber. The body is always cremated in the coffin as received and the time taken for the completion of the process varies from about one hour to one and a half hours. The ashes are then gathered by a Crematorium Official for disposal, according to the directions of the representatives of the deceased. The latter may choose between the following methods of disposal :

#### IN THE COLUMBARIUM.

The ashes are placed in an urn and deposited in a niche in the Columbarium. A simple urn of standard design may be purchased from the Cemetery Office if desired, at a charge of 10s. 6d. The minimum charge for a simple niche is £2 2s. od. Urns of a more elaborate type may be purchased if desired, but care must be taken to see that these are of the correct size and type, as set out in the Regulations. If it is intended to place them in a niche, the advice of the Registrar should always be sought before such a purchase is made.

Panels or tablets for niches must be of teak wood or bronze. The inscription will be limited to the name, the date of birth and death, and will be subject to the approval of the Committee.

A fee of 5s. per month is charged for the temporary deposit of urns in the Columbarium, pending other arrangements for disposal. An urn, which remains the property of the Parks Committee, will be provided free of charge for this purpose and if this fee of 5s. is not paid, the ashes will, after a period of three months, be scattered in the Garden of Rest.

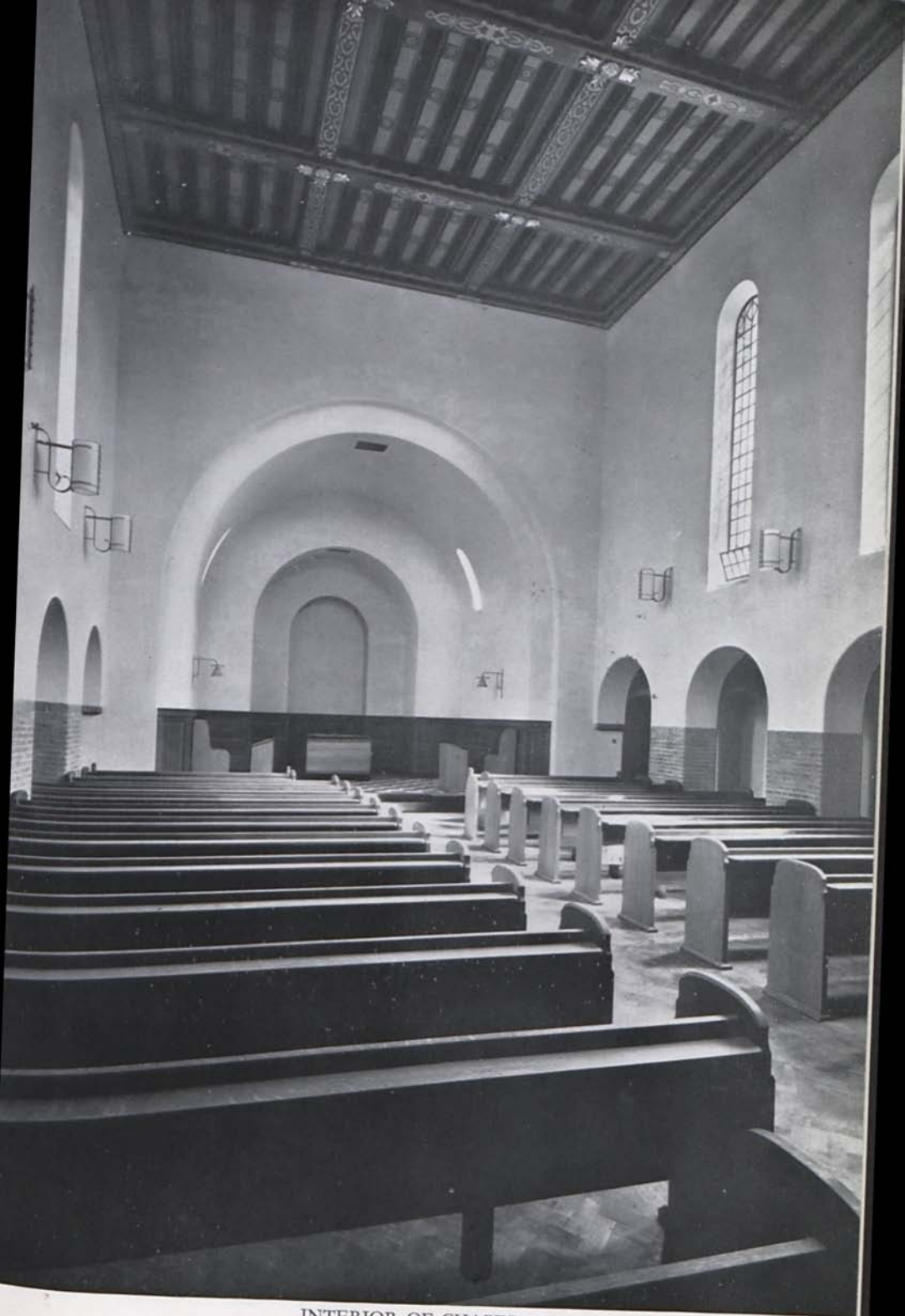
#### IN THE GARDEN OF REST.

The ashes are reduced to fine particles for easy assimilation by the soil and then reverently dispersed in the Garden of Rest by a Crematorium Official if desired. The charge for scattering the ashes in this way is 5s., and the Registrar will require a signed authority before it can take place.

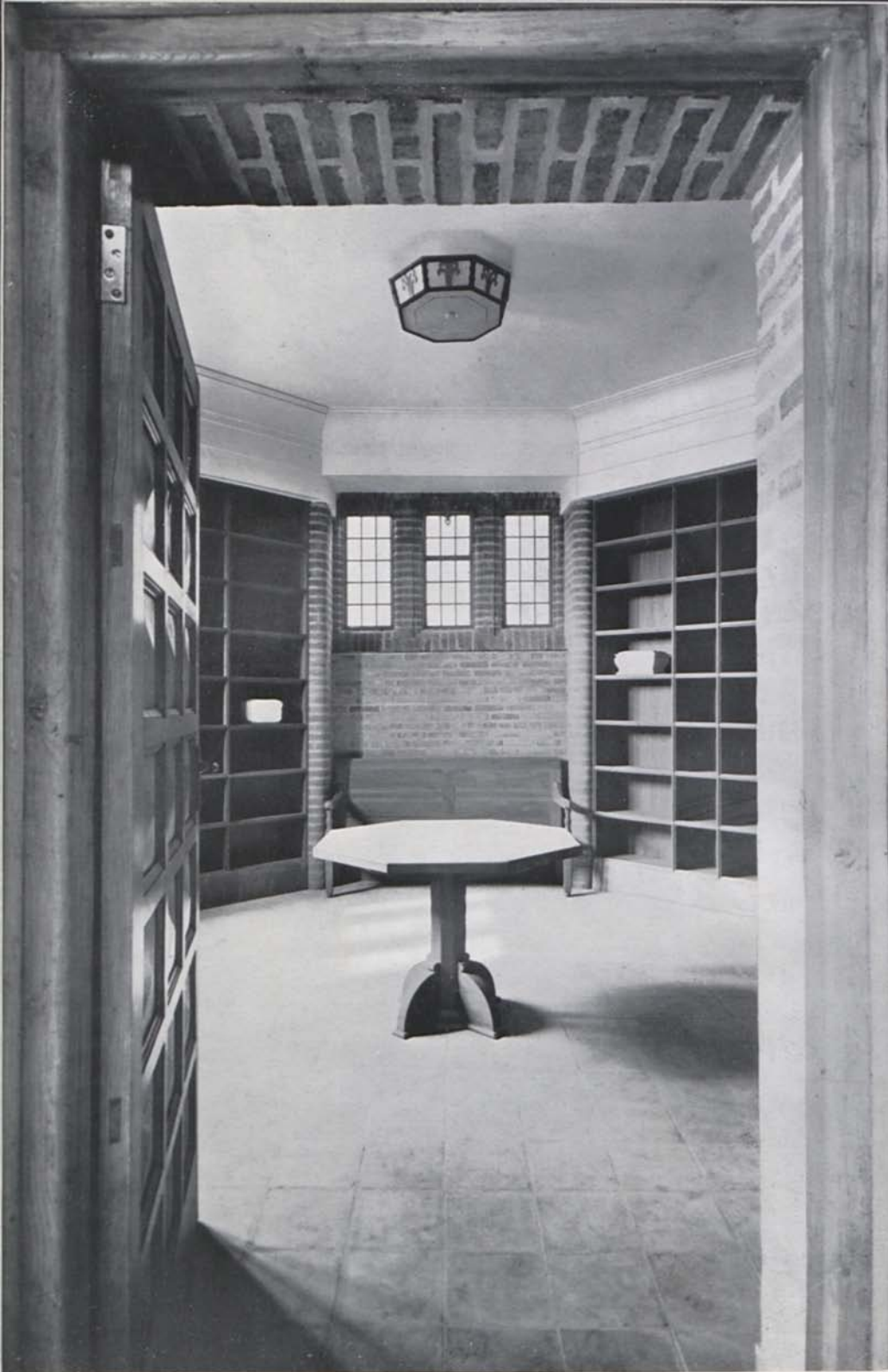
There is no compulsion on relatives to adopt either of the above methods, as the ashes may be removed elsewhere for disposal in any manner desired. If the ashes are taken away, a receipt for same must be signed and a statement made thereon indicating how it is intended to dispose of them for entry in the Register of Cremations.

Should it be desired to inter the ashes in a grave in any of the City cemeteries, the fee for such interment will be the same as for an ordinary earth burial, varying according to the class of grave and section of the cemetery in which the remains are deposited.

Except in cases where it is intended to bury the ashes in Lodge Hill Cemetery, a certificate on Form L 1 must be obtained from the Cemetery Office, before the remains may be interred elsewhere. Relatives may if desired, obtain a Certificate of Cremation for legal purposes. A charge of 2s. 7d. is made for these certificates.



INTERIOR OF CHAPEL



COLUMBARIUM

## TABLE OF FEES AND CHARGES

|   | <i>Inhabitant<br/>of the City<br/>of Birmingham.</i> |       | <i>Non-Inhabitant<br/>of the City<br/>of Birmingham.</i> |       |
|---|--|-------|--|-------|
|   | £  | s. d. | £  | s. d. |
| For the cremation of the remains of :   |  |       |  |       |
| (i) A person whose age at the time of death did not exceed 16 years . . . . . | 3  | 3 0   | 4  | 4 0   |
| (ii) A person whose age at the time of death exceeded 16 years . . . . .      | 4  | 4 0   | 5  | 5 0   |

### SUPPLEMENTAL CHARGES AND FEES

|  | £ | s. | d. |  |
|--|---|----|----|--|
| Simple urn for ashes . . . . .   |   | 10 | 6  |  |
| For a single niche in columbarium—from . . . . .                                 | 2 | 2  | 0  |  |
| Niche to contain two or more urns—from . . . . .                                 | 4 | 4  | 0  |  |
| Fee for deposit of urns after the first . . . . .                                | 1 | 1  | 0  |  |
| Temporary deposit of urns per month, pending arrangements for disposal . . . . . |   | 5  | 0  |  |
| Fee for Minister of Religion . . . . .   |   | 5  | 0  |  |
| Certificate of Cremation . . . . .   |   | 2  | 7  |  |
| Scattering ashes in the Garden of Rest . . . . .                                 |   | 5  | 0  |  |
| For the right to place inscription on panel or tablet . . . . .                  | 1 | 1  | 0  |  |
| Fee for Medical Referee . . . . .  |   | 10 | 6  |  |

*N.B.*—The fee for interment of cremated remains in a grave in any of the City cemeteries will be the same as the fee for an ordinary interment, varying according to the class of grave in which the remains are deposited.

NOTE.—The above mentioned fees and charges for cremations are maximum fees, and it is in the discretion of the Corporation to allow a reduction in such fees in cases where they consider such a course to be desirable, *e.g.*, in the case of any person insured under the National Health Insurance Acts or the dependants of an Insured person, or a non-paying inmate of a public hospital or institution.

## SPECIAL REGULATIONS APPLYING TO LODGE HILL CREMATORIUM

1. Cremations are conducted in accordance with the Cremation Regulations, dated October 28, 1930, made by the Secretary of State for the Home Department, under Section 7 of the Cremation Act 1902 (2 Edw. 7 c. 8) and Section 10 of the Births and Deaths Registration Act, 1926 (16 and 17 Geo. 5 c. 48).

2. Application for cremation must be made to the Registrar, Lodge Hill Cemetery, Selly Oak, Birmingham 29, between the hours of 9 a.m. and 5 p.m. (Sundays excepted) at least 48 hours before the proposed hour of cremation. When Sunday intervenes at least 72 hours' notice must be given.

3. The application for cremation should be made by an Executor whenever practicable, but it may be made by the nearest surviving relative or any other person who can show a satisfactory reason why it is not made by an Executor or nearest relative.

4. Times during which cremations may take place are as follows :

Mondays to Fridays : 10 a.m. to 12 noon and  
1.30 p.m. to 3 p.m.

Saturdays : 10 a.m. to 12 noon.

Special arrangements may be made for cremations at other hours.

(Cremations are not allowed on Sundays, Christmas Day and Good Friday.)

5. Forms A, B and C, together with the Certificate for Disposal issued by the Registrar of Births and Deaths, must be delivered to the Medical Referee, c/o The Registrar, Lodge Hill Cemetery, not later than 10 a.m. on the day previous to the cremation, excluding Sundays.

6. The medical certificates must be obtained by and at the expense of the representative of the deceased.

7. No cremation shall take place except on the written authority of the Medical Referee, who may in any case decline to allow the cremation without stating any reason.

8. The remains of any person who is known to have left a written direction to the contrary cannot be cremated, nor any human remains which have not been identified.

9. Any service or demonstration in connection with a funeral shall be subject in all things to the control of the Corporation. All persons admitted into the crematorium shall be subject to the orders and control of the Registrar, who shall have full power to exclude or remove from the crematorium any member of the public whom he, in his discretion, may think fit so to exclude or remove.

10. All persons attending a funeral are requested to leave the building immediately after the conclusion of the service or other ceremony.

11. Two representatives of the deceased may see the coffin introduced into the incinerating chamber if desired, but no inspection of the actual process of cremation will be permitted.

12. The remains will be collected and sealed in a simple urn unless other instructions are given by the relatives. A charge of 10s. 6d. will be made for such urns unless it is intended to deposit them temporarily in the Columbarium, when a fee of 5s. per month will be made for such accommodation and no charge made for the urn, which will remain the property of the Corporation. If the charge for the temporary deposit of urns is unpaid, the ashes will, after a period of three months, be scattered in the Garden of Rest.

13. Urns or caskets other than those supplied by the Corporation may be purchased, if desired, but if it is intended to deposit same in the Columbarium, the purchaser should satisfy himself that the size is suitable for the niche selected. Such urns are subject to the approval of the Corporation as to design and material.

14. No flowers are to be placed in the niches.
15. A signed authority on Form N 1 must be given to the Registrar of the Crematorium before ashes can be scattered in the Garden of Rest.
16. The Corporation will require a receipt to be signed on Form M 1, if the ashes are taken away from the Crematorium. The person signing the receipt must state thereon how he proposes to dispose of the ashes. A Certificate on Form L 1 must be obtained if it is intended to bury the ashes elsewhere than at Lodge Hill Cemetery. A charge of 2s. 7d. will be made for such Certificate.
17. A charge of 5s. will be made in respect of a funeral arriving more than 15 minutes after the time arranged for the cremation to take place and a further charge of 5s. for every additional 15 minutes.
18. Coffins must be made of some readily combustible wood, not more than  $\frac{1}{2}$ " thick. English elm and other hard woods should not be used as they are difficult to burn. Resinous or badly seasoned wood should also be avoided.
19. Coffins must not have cross-pieces under the sole or on the bottom as these have to be removed before the cremation can take place. No objection will be taken to strips placed lengthwise to strengthen the bottom of the coffin.
20. The Corporation reserves the right to remove any brass or metal nails, handles or furniture from coffins as it is undesirable from every point of view that metal should remain amongst the ashes on completion of the cremation.
21. Coffins must not be painted or varnished but may be covered with a thin woollen material such as white, black or purple cloth, if desired. Sawdust must not on any account be put in the coffin. Pitch must not be used for coating the inside.
22. The Corporation will not cremate a body in a lead or iron coffin but when it is imperative, a thin zinc lining may be inserted in the coffin. No other metal but zinc will be allowed for this purpose.



23. The extreme outside measurements allowed for a coffin are as follows :

|        |   |   |   |              |
|--------|---|---|---|--------------|
| Length | . | . | . | 7 ft.        |
| Width  | . | . | . | 2 ft. 4 in.  |
| Depth  | . | . | . | 1 ft. 10 in. |

24. The Funeral Directors are responsible for complying with the Regulations as set out in paragraphs 18 to 23 and the Corporation reserve the right to postpone the cremation of a body that is enclosed in an unsuitable coffin.

25. At times when the building is not in use for cremations or funeral services, the public will be admitted at the discretion of the Registrar. The Garden of Rest may be visited at any time during the hours at which the cemetery is open, i.e. :

ON WEEKDAYS DURING :

|                              |      | a.m. | p.m. |
|------------------------------|------|------|------|
| January and December         | from | 9    | to 4 |
| February, March and November | ,,   | 9    | to 5 |
| April, September and October | ,,   | 9    | to 6 |
| May, June, July and August   | ,,   | 9    | to 7 |

ON SUNDAYS DURING :

|   |      | a.m. | p.m. |
|---|------|------|------|
| January and December                            | from | 11   | to 4 |
| February, March, April, October<br>and November | ,,   | 11   | to 5 |
| May, June, July, August and<br>September        | ,,   | 11   | to 6 |

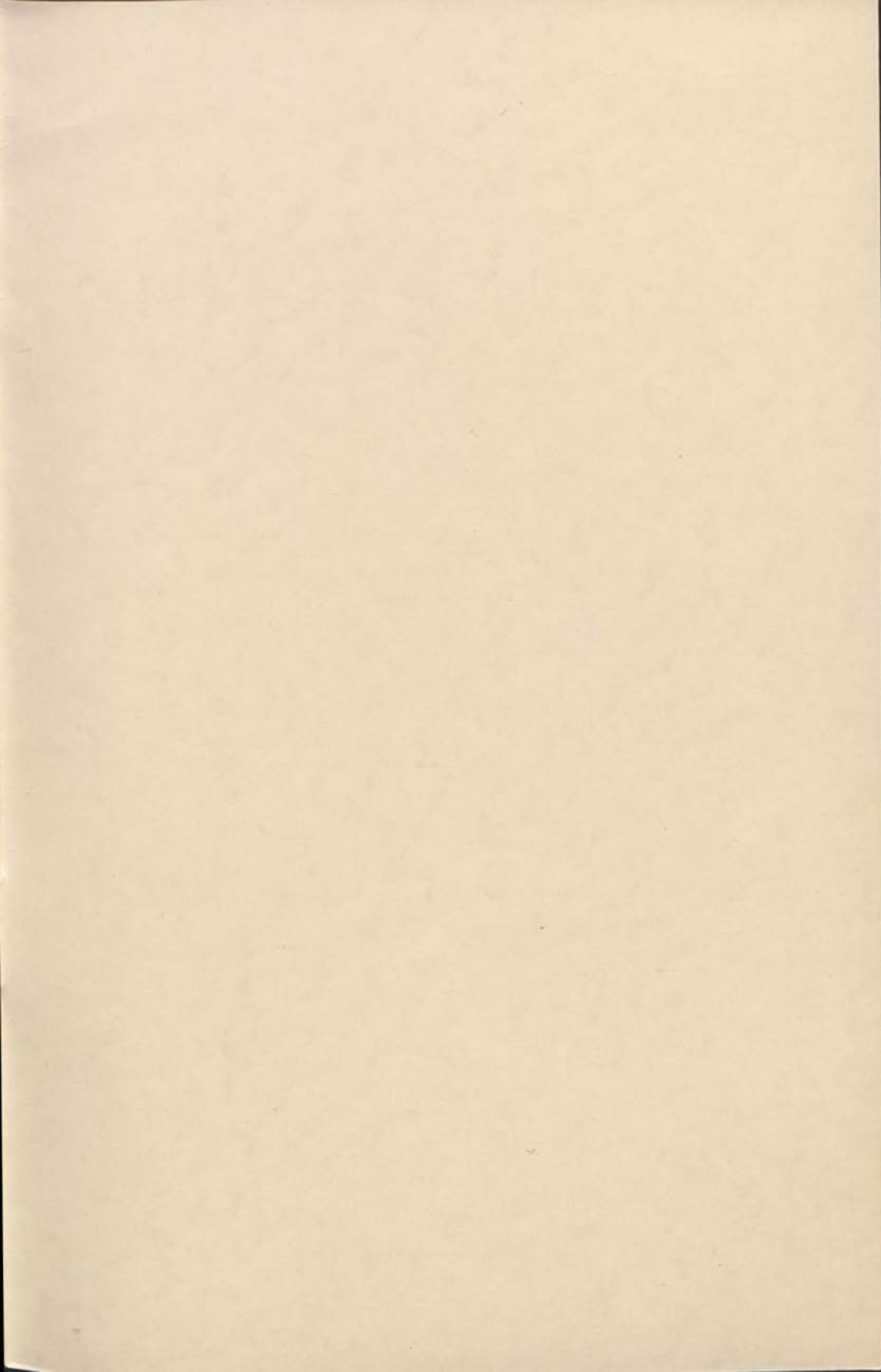
The cemeteries are opened on Good Friday at 9 a.m. and on Christmas Day as on a Sunday.

EXTRACT FROM THE CREMATION ACT, 1902

“8. (1) Every person, who shall contravene any such regulations as aforesaid, or shall knowingly carry out or procure or take part in the burning of any human remains except in accordance with such regulations and the provisions of this Act, shall (in addition to any liability or penalty which he may otherwise incur) be liable on summary conviction to a penalty not exceeding fifty pounds. Provided that any person aggrieved by any conviction may appeal therefrom to quarter session.

(2) Every person who shall wilfully make any false declaration or representation, or sign or utter any false certificate with a view to procuring the burning of any human remains, shall (in addition to any penalty or liability which he may otherwise incur) be liable to imprisonment with or without hard labour not exceeding two years.

(3) Every person who with intent to conceal the commission or impede the prosecution of any offence, procures or attempts to procure the cremation of any body, or with such intent makes any declaration or gives any certificate under this Act, shall be liable to conviction on indictment to penal servitude for a term not exceeding five years.”





DIRECTIONS FOR CREMATION AT DEATH

*I hereby place on record my earnest desire that my body shall be Cremated at death, at the City of Birmingham Crematorium, Lodge Hill, Selly Oak, Birmingham 29.*

*Signature* .....

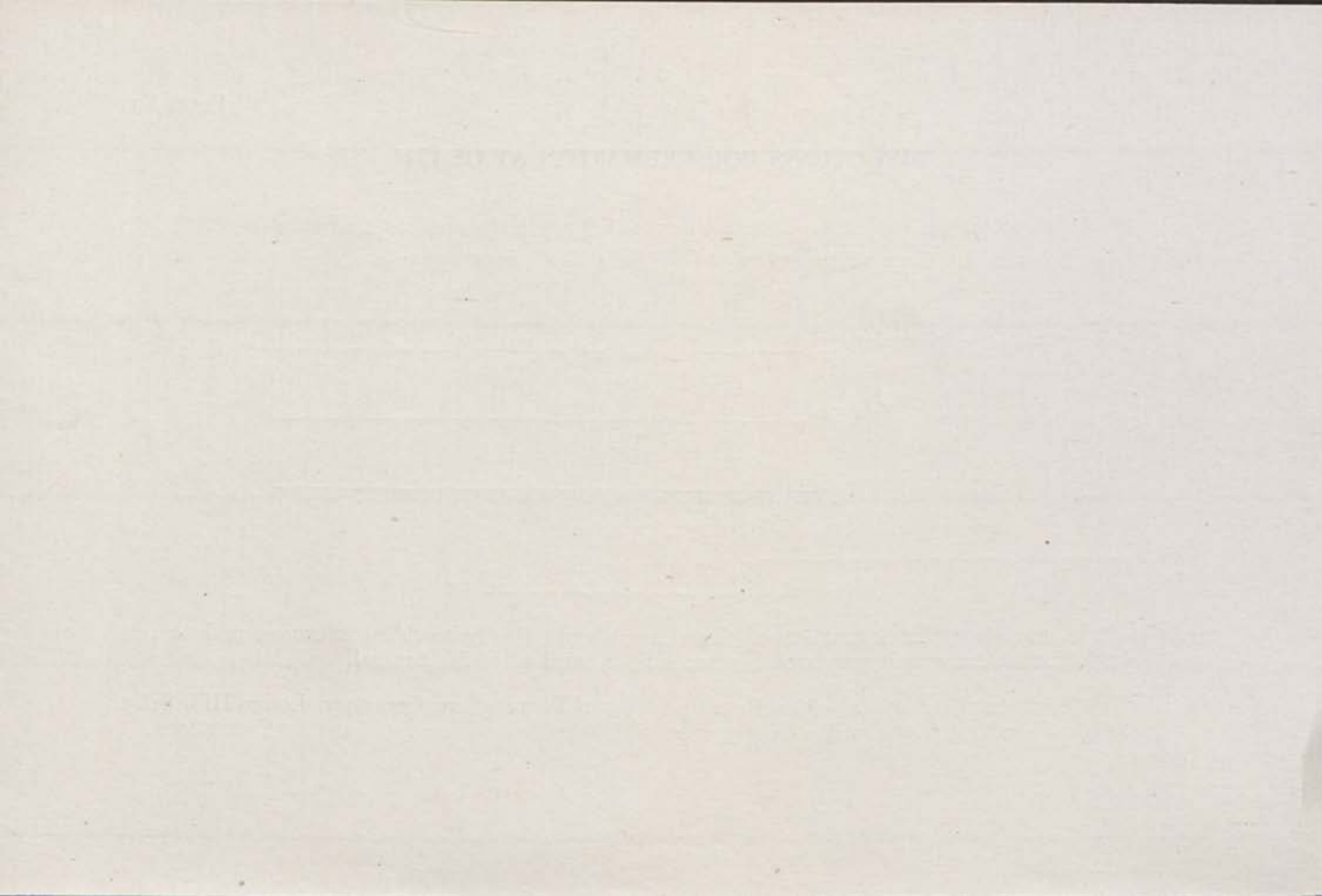
*Address* .....

.....

*Date* .....

Note.—It is important that intimation of this desire should also be made to Executors and nearest relatives, otherwise it may not become known until after the funeral.

*To Executors and others*—The Registrar, City of Birmingham Cemetery, Lodge Hill, Selly Oak, Birmingham 29, will willingly give information or advice in arranging Cremations.

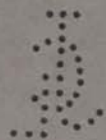


L 614.62  
1

Abney Park Cemetery Co



**HENDON**  
**CREMATORIUM**  
**AND**  
**GARDEN OF**  
**REMEMBRANCE**







*Body to purifying flame  
Soul to the Great Deep whence it came  
Leaving a song on earth below  
An urn of ashes white as snow.*

WM. ALLINGHAM.



*Abney Park Cemetery Company, Ltd., Stoke*

*Newington*

THE GARDEN OF  
REMEMBRANCE  
AT  
HENDON PARK

HOLDERS HILL ROAD

HENDON N.W.7

## CONTENTS

|  | PAGE |
|--|------|
| PREFACE .. .. .                              | 5    |
| HENDON CREMATORIUM .. .. .                   | 7    |
| THE GARDEN OF REMEMBRANCE AND COLUMBARIUM .. | 12   |
| HOW TO ARRANGE FOR A CREMATION .. .. .       | 14   |
| INSTRUCTIONS FOR FUNERAL DIRECTORS .. .. .   | 16   |
| SOME REASONS FOR CREMATION .. .. .           | 18   |
| DIRECTIONS FOR CREMATION AT DEATH .. .. .    | 20   |
| SCALE OF CHARGES .. .. .                     | 21   |
| MAP OF HENDON DISTRICT .. .. .               | 23   |

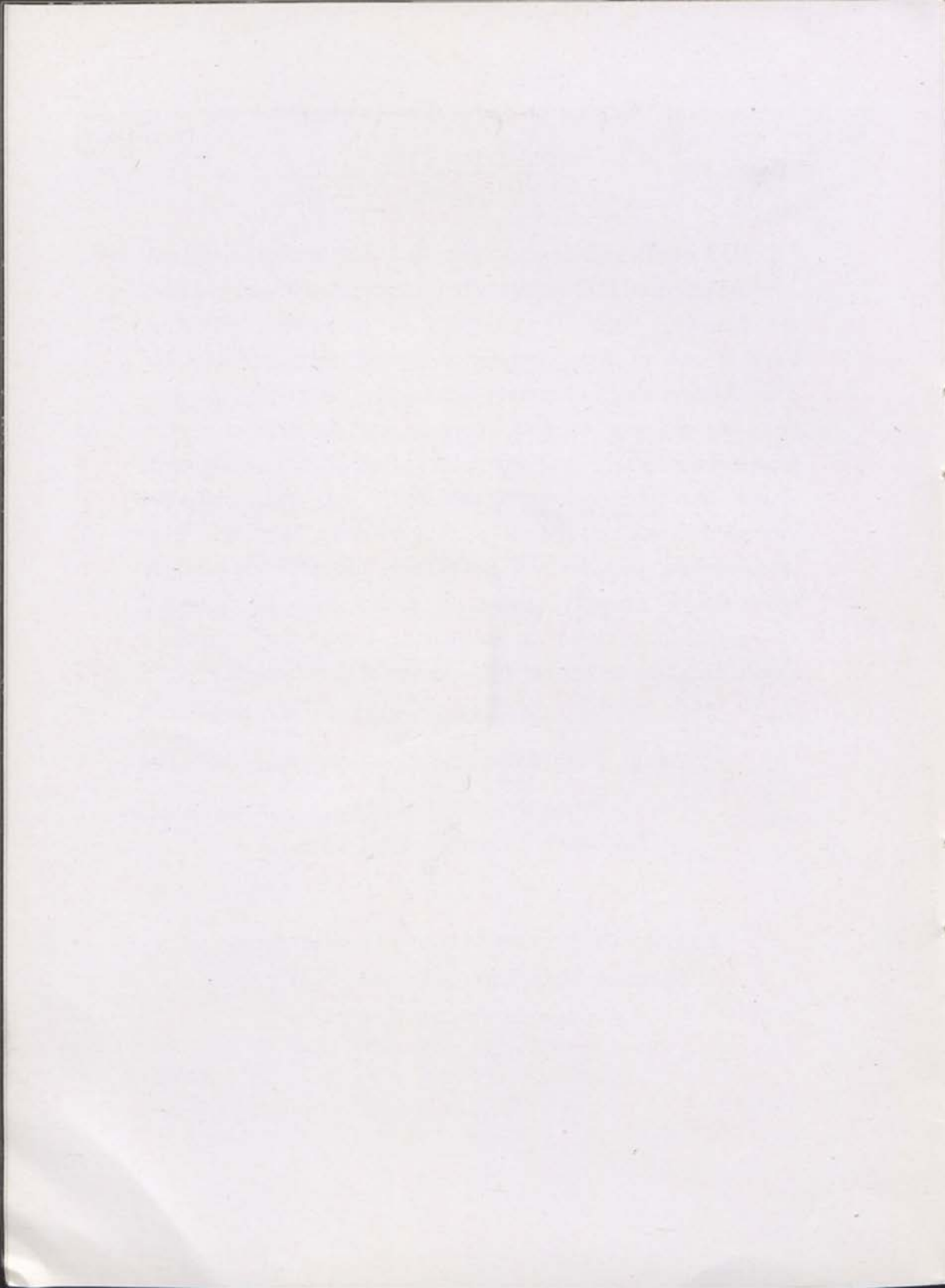
## PREFACE

THIS booklet attempts to give in a simple and brief form the essential information about cremation in general and the Hendon Park Crematorium in particular. Hendon Park is one of four cemeteries owned and managed by The Abney Park Cemetery Company Ltd. The present crematorium was opened in 1922 and to meet the ever growing number of cremations an entirely new and separate chapel has recently been built which thus gives valuable increased accommodation to that already existing. The crematorium can be visited at any time, except when cremation is actually taking place, between the hours of 10—4 and from 10—1 on Saturdays. Letters and enquiries should be addressed either to the office of the Company,

ABNEY PARK CEMETERY COMPANY LTD.,  
STOKE NEWINGTON, N16.  
*Telephone* : STAMFORD HILL 2678.

OR

HENDON PARK CEMETERY AND CREMATORIUM,  
HOLDERS HILL ROAD, HENDON, N.W.7.  
*Telephone* : FINCHLEY 0657.





## HENDON PARK CREMATORIUM

### SITUATION AND DESCRIPTION OF BUILDINGS

THE Crematorium and adjoining grounds of some 40 acres are situated between Hendon and Finchley in Holder's Hill Road, three minutes from Mill Hill East station on the L.N.E.R., and omnibus No. 240 between Golder's Green (underground station) and Edgware passes the gates every few minutes.

Arriving at the main entrance we note the pleasant timbered gatehouse structure flanked with the stone-work buildings of the Superintendent's House and the Cemetery offices.

The main road rises gently from the entrance and is bordered on either side by well-kept lawns and gay in summer with flowers and ornamental trees.

At the first fork we bear to the right and soon see on the left amid open park like scenery the chapel, with its square tower and slender spire nestling like one of the old Hertfordshire Parish Churches among the trees.

Following the poplar avenue we arrive at the entrance to the chapels and cloisters. The door on the right leads to the old chapel built in the perpendicular Gothic style, with an open timber roof and chiefly remarkable for the fine facsimile reproduction in coloured terra cotta of Lucca della Robbia's "Resurrection." This early work of the great Renaissance artist (c. 1448) in the cathedral at Florence was specially copied by Italian craftsmen for its present position.

Crossing the passage way we enter the cloisters, immediately opposite is the door of the waiting room, a cheerfully furnished apartment for rest or waiting which communicates with the crematorium chapel. Continuing round the cloister walks we may note that provision is made for a series of vaults beneath the stone floor while on the walls above, entirely protected from the weather are placed the Columbarium niches, individual memorial tablets, or the simpler tribute of an engraved name on a dignified "Recordia."

Reaching the south cloister we enter the new crematorium Chapel. It will at once be seen that a pleasant and modern

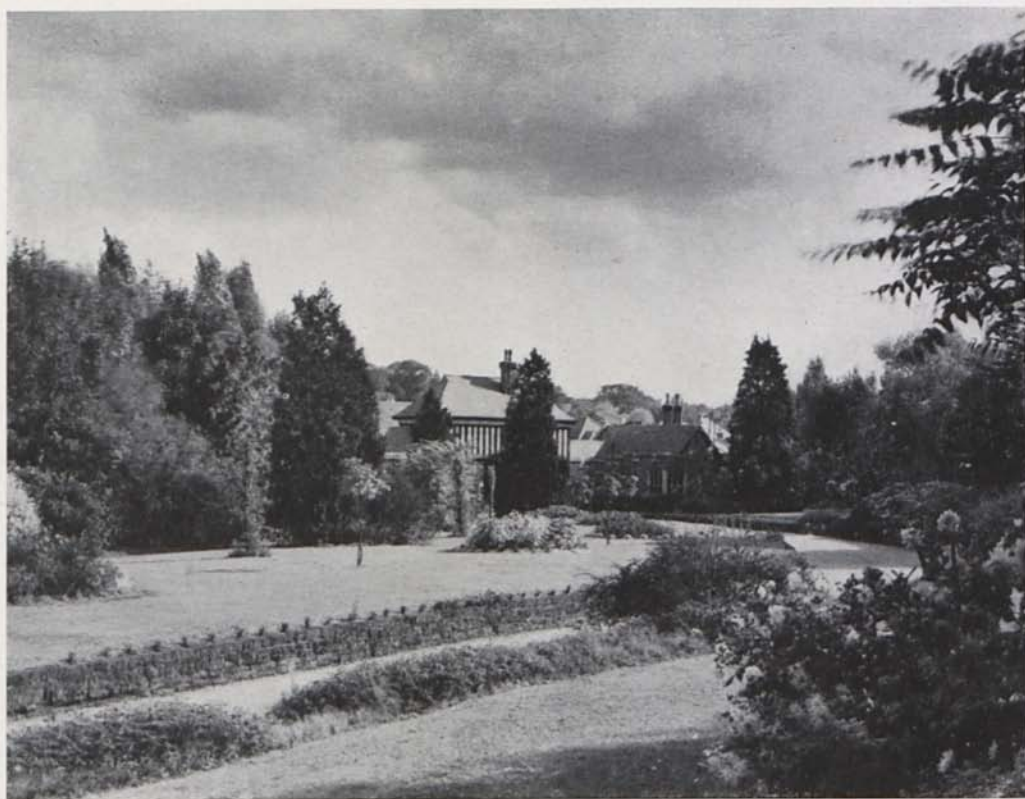




style of decoration has here been adopted ; the curved arc of the ceiling springs directly from the walls and both have been treated in a uniform cream colour which harmonizes with the natural waxed oak of the furniture and fittings.

The chapel, providing seating accommodation for 80 people, is illuminated by indirect lighting which, together with the thermostatic heating system which has been installed, goes far to dispel any sense of chill and depression so often associated with cemetery chapels.

The east end is paved with marble and throughout the year is kept replenished with fresh flowers from the Company's greenhouses. To the right is the catafalque on which the



coffin is reverently placed at the commencement of the service and there remains till the committal sentences, when the double doors behind slowly open and the coffin automatically passes through the blue curtain out of sight into the reception chamber. Nothing further is seen by the mourners as the coffin is not transferred to the incinerator below until after the conclusion of the service.

It should be added that provision for music at these services has been made and as far as possible, the wishes of relatives will be met whether it be in selecting one of our favourite English hymns or in playing the solemn and inspiring music of Bach and Handel.



Various as are the views of people with regard to religious and social customs, they are at one in attributing some idea of sacredness to the place where the bodies of their deceased friends rest. Whether or not this should be formally recognised and confirmed by the consecration of the soil by a bishop or priest is a matter to which some attach great importance, and others none. In order that no such question should be raised at Hendon Park, the whole of the Cemetery was formally dedicated by the late Bishop of London. There is thus no invidious line of demarcation of personal belief and those who wish to be interred with the stately ritual of the Common Prayer Book or those who prefer a Free Church service are equally free to choose for themselves.



## THE GARDEN OF REMEMBRANCE

*'Scatter my ashes!  
Hereby I make a trust;  
I in no grave be confined,  
Mingle my dust with the dust  
Give me in fee to the wind!  
Scatter my ashes!'*

JOHN GALSWORTHY

AFTER the cremation the ashes are carefully gathered together and if they are to be retained at the Crematorium placed in a sealed and numbered urn, otherwise they are handed to the person who authorised the cremation. In the majority of cases it is usual to disperse the few remaining handfuls of white ash in the Garden of Remembrance near the Chapel, this is carried out privately by members of the staff. An alternative is to deposit the ashes in a

casket of terra cotta or other material and place it in one of the Niches of the Columbarium, both caskets and niches may be purchased at the Company's office and prices varying according to material, size and position.

With the completion of the New Chapel (described on page 9) and in view of the greatly increased number of cremations taking place there, the company are laying out opposite the South entrance a new Garden of Remembrance on lines which it is felt will appeal to many people. Centreing round a lily pool and fountain a formal garden of pergola paths and rose beds has been planned where, while no headstones or monuments will interfere with the garden arrangement, it will be possible for those who wish to do so to acquire as a definite position a small plot of living green as the resting place of the ashes of themselves or their family. Particulars of these and other memorials which the Company sanction can be obtained from the Secretary.



## HOW TO ARRANGE FOR A CREMATION

WHEN a cremation is desired a Funeral Director should be immediately informed and instructed to prepare a suitable coffin.

Notice should be given as early as possible to the Company (see page 5) stating the day and hour it is to take place.

It is not lawful to cremate the remains of any person who is known to have left a written direction to the contrary, nor those of any person which have not been identified.

No Cremation can be allowed until the death has been registered, except when an Inquest has been held and a certificate given by the Coroner.

Forms of application for a Cremation (Form A) and the requisite medical certificates (Forms B and C) should be applied for as soon as possible, they will be sent post free direct from the Company's office or can be obtained from the Funeral Director.

Form A has to be signed, and the Statutory Declaration comprised therein made by an Executor or the nearest surviving relative whenever practicable, but it may be done by *any* other person who can give a satisfactory reason why the application is not made by an executor or the nearest surviving relative.

Form B is the certificate relative to the cause of death to be given by the Doctor who attended the deceased in the last illness.

Form C is the certificate confirming the last, and must, if not given by the Medical Referee, be given by a second Doctor of not less than five years' standing, who shall not be a relative of the deceased or a relative or partner of the first Doctor who has given the certificate in Form B.

In the event of difficulty being experienced in finding anyone at short notice who is properly qualified as above, the company will make a special appointment for the occasion.

When a Coroner's Inquest has been held, a certificate in Form E will be given by the Coroner in place of the Medical Certificates B and C.

When completed, the Forms together with the Registrar's Certificate of Death should be forwarded under cover, addressed :—

“ The Medical Referee,”  
c/o Abney Park Cemetery Company Ltd.,  
Stoke Newington, London, N.16.

All the certificates must be obtained at the expense of the applicant. All papers dealing with Cremation are treated as confidential.

Any competent Funeral Director will attend to these forms or advise on the procedure and it must be borne in mind that it is he and not the Crematorium Authorities who carry out all the funeral arrangements until the coffin is placed in the catafalque and given into the Company's care.



## INSTRUCTIONS TO FUNERAL DIRECTORS

CREMATIONS can take place between the hours of 9 a.m. and 5 p.m., Saturdays between 9 a.m. and 12 noon.

No Cremations can take place on Sundays, Christmas Day, Good Friday or Bank Holidays.

The body of the deceased must be brought to the Crematorium in a coffin suitable for cremation, i.e. of readily combustible wood such as canary wood, white wood, Canadian elm or thin pine. English elm or metal coffins with the exception of zinc are not allowed, any metal furniture must be attached so as to be easily removed before cremation.



The coffin must not exceed 7 feet in length, 2 feet 4 inches in width and 1 foot 9 inches in depth. When the body has been placed in an unsuitable coffin any necessary change must be made elsewhere than on the Company's premises. The body is always incinerated in the coffin as received, and in no case will the Company remove or allow the removal of a body from the coffin or allow the coffin to be opened for any purpose whatever after it has been given into their charge.

Funeral Directors must always provide the required number of bearers for carrying the coffin into the Chapel and placing it on the catafalque.

It is desirable that copies of the necessary forms, supplied by the Company, should be kept in stock.





## SOME REASONS FOR CREMATION

CREMATION is permanent and complete, effecting in a short time that which takes years to do if the body is buried.

Cremation admits of the same ceremonial as for ordinary burial and in no way interferes with any religious ceremony or rite.

Cremation offers facilities for a return to the ancient practice of interment in churches.



Cremation provides the most effective safeguard against foul play. Three doctors must give their certificates, two of whom must view the body after death. Thus the utmost safeguards are taken.

Cremation is easily arranged for, and less expensive than the ordinary form of burial where a private grave is used.

Cremation leaves no graves to be tended, and being carried out indoors does not expose the mourners to the frequent inclemency of the weather.

Cremation, if generally adopted, would avoid the necessity of adding to our large and costly cemeteries ; a crematorium does not become filled up or unused, and valuable land would be available as open spaces for the community.

THE ABNEY PARK CEMETERY CO. LTD.

STOKE NEWINGTON, LONDON, N.16

DIRECTION FOR CREMATION  
AT DEATH

I hereby place on record my earnest desire that my body shall be cremated after death at the HENDON PARK CREMATORIUM, HOLDERS HILL ROAD, HENDON, N.W.7.

SIGNATURE .....

FULL NAME (*Title, Mr., Mrs. or Miss*).....

.....  
*block letters*

ADDRESS .....

DATE .....

*It is important that this desire should be made known to the Executors and nearest relatives, and not merely inserted in a will otherwise it might not become known till after the funeral.*

## SCALE OF CHARGES

|   | <i>£</i> | <i>s.</i> | <i>d.</i> |
|---|----------|-----------|-----------|
| Cremation of an Adult, including use of Chapel and services of the Company's Chaplain .. ..     | 4        | 4         | 0         |
| Cremation of a Child under 10 years .. ..   | 3        | 3         | 0         |
| "    "    "    "    "    3 years .. ..  | 2        | 12        | 6         |
| Cremation of a Still Born Child, before or after another Cremation .. ..                        | 1        | 1         | 0         |
| Special decoration of Chapel with Palms and flowers from  | 3        | 3         | 0         |
| Scattering Ashes in the Garden of Remembrance ..  | 10       | 6         |           |
| Urns to contain the Ashes .. .. from  | 15       | 0         |           |
| Deposit of Urn in Public Vault .. ..  | 2        | 12        | 6         |
| Niche in Columbarium for one Urn, for a period of 25 years including fee for deposit .. .. from | 5        | 5         | 0         |
| Renewal for further periods of 25 years, one third of the original amount paid.                 |          |           |           |
| Deposit of subsequent Urns after the first, in Family Niche .. .. from                          | 1        | 1         | 0         |
| Temporary Deposit of Urn, after the first month, per month, payable in advance .. ..            | 5        | 0         |           |
| Flat tablet in paved walk of Garden of Remembrance 1' 6" x 1' 6" .. ..                          | 4        | 4         | 0         |
| Fee for interment of Urn under same (including excavating) .. ..                                | 1        | 11        | 6         |

SCALE OF CHARGES *continued.*

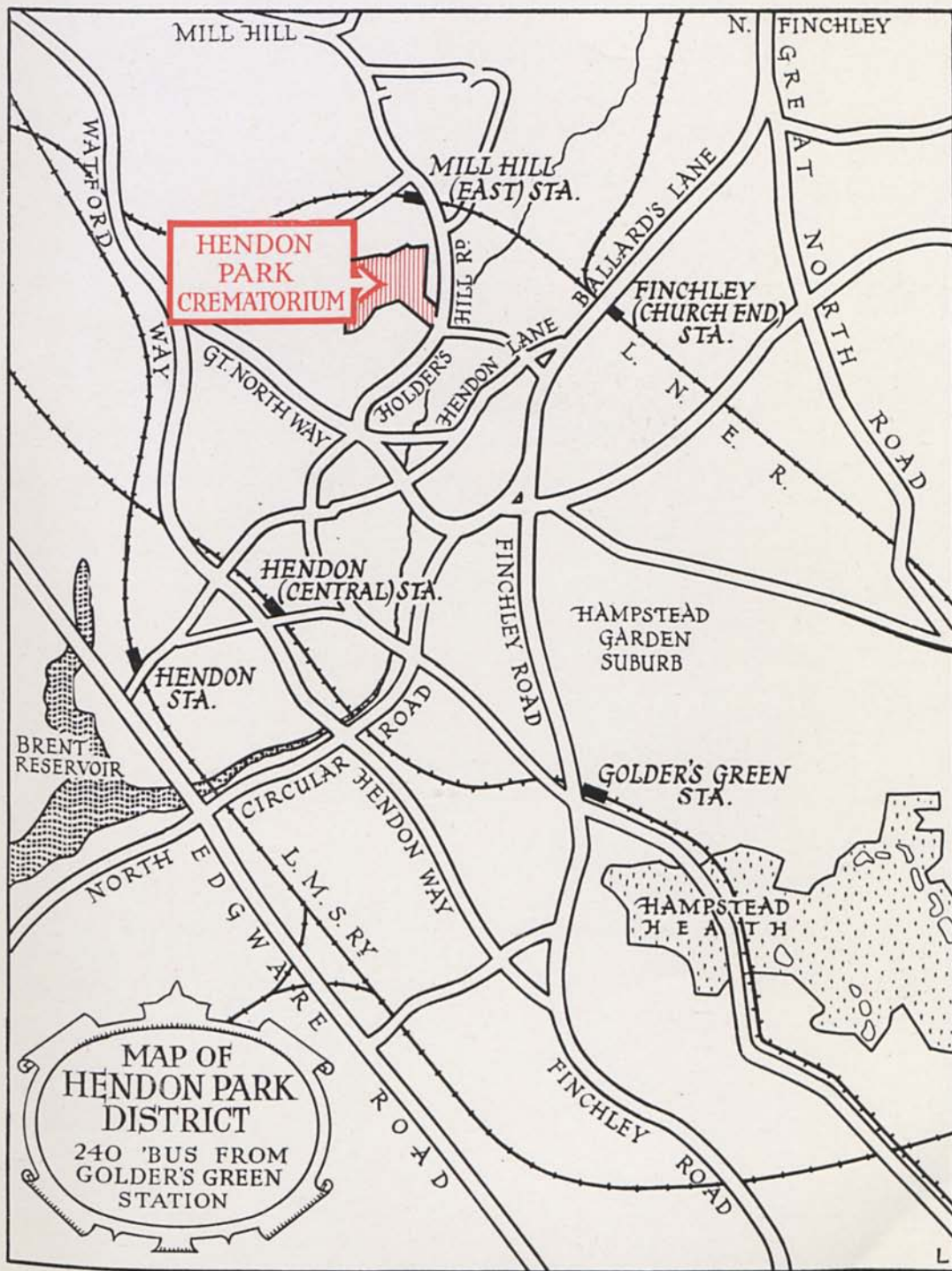
|   | £  | s. | d. |
|---|----|----|----|
| Space for tablet on cloister wall .. .. from  | 10 | 10 | 0  |
| Tablet on Recordia including inscription of 50 letters<br>from  | 3  | 3  | 0  |
| Certificate of Cremation obtainable at the Company's<br>Office, Stoke Newington, N.16 .. .. .   |    | 2  | 7  |
| If the Ashes are to be interred in one of the Company's<br>Cemeteries the Interment fee will be reduced by one<br>guinea from the Scale Charge. |    |    |    |

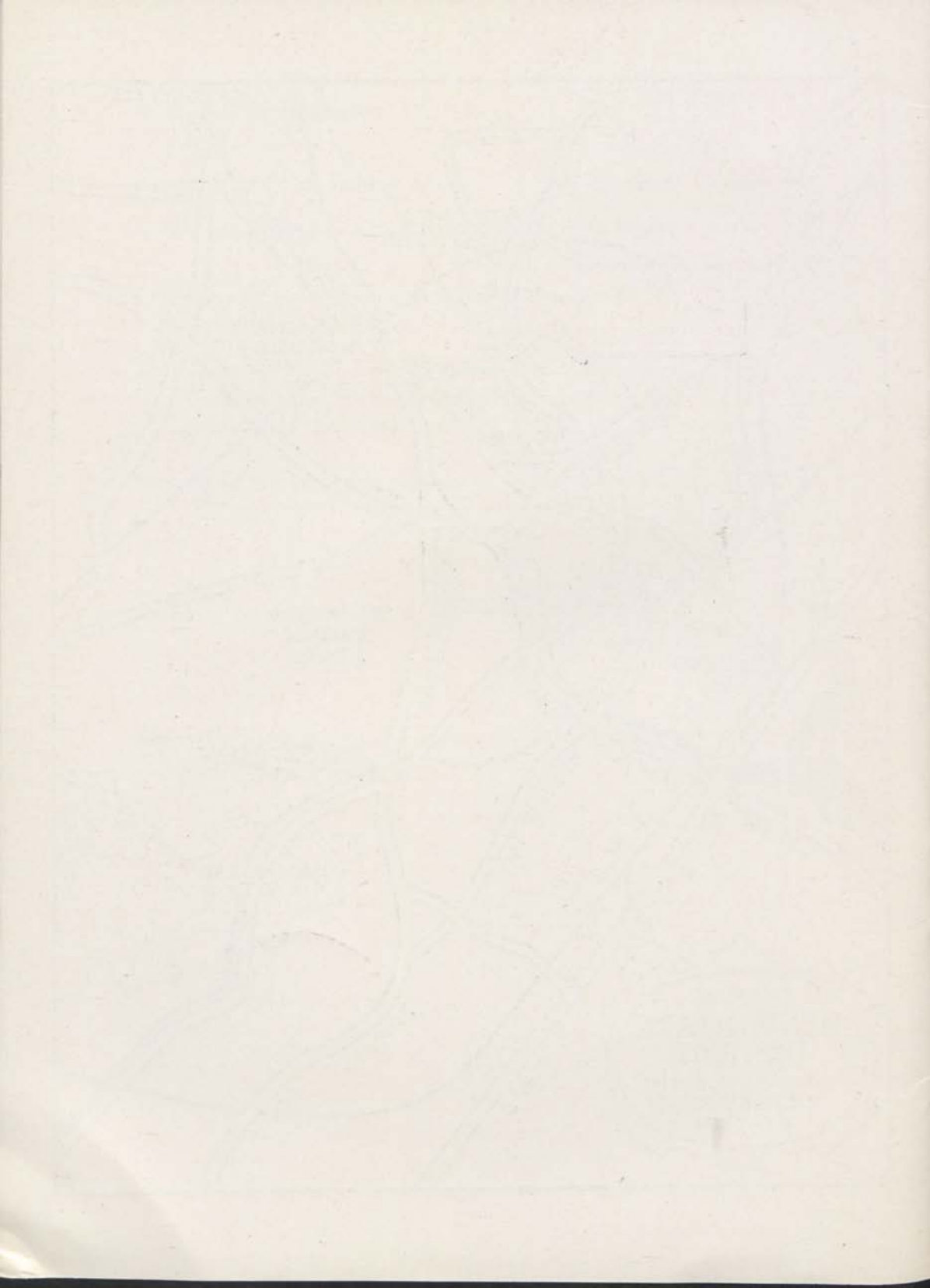
NOTE. If any such payment be in arrears for 21 days, the Company reserve the right to dispose of the ashes as they think fit.

1938

EDWARD S. CRESSY,  
*Secretary and General Manager.*

Abney Park Cemetery Co. Limited,  
Stoke Newington, N.16.









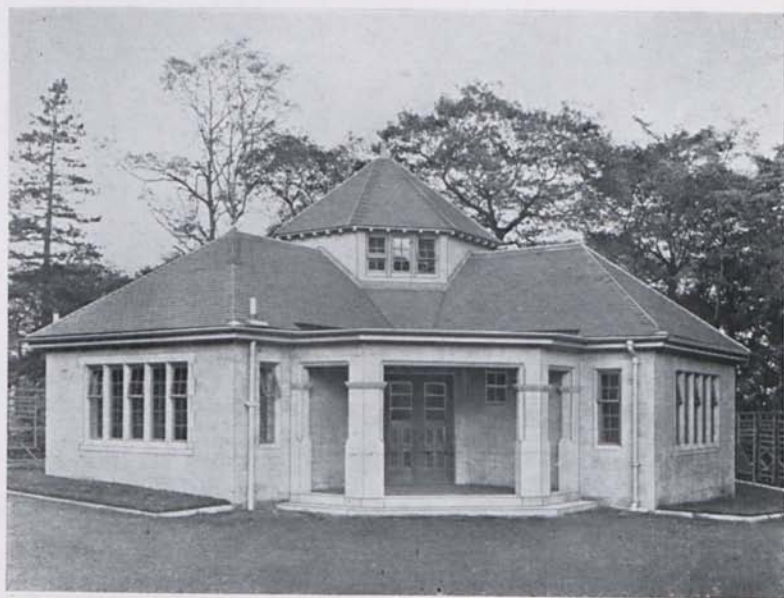


L614.62

1 Leeds, Eng.

LAWNS WOOD CEMETERY AND  
CREMATORIUM

## Chapel of Rest



CHAPEL OF REST AND WAITING ROOM.



## THE CHAPEL OF REST

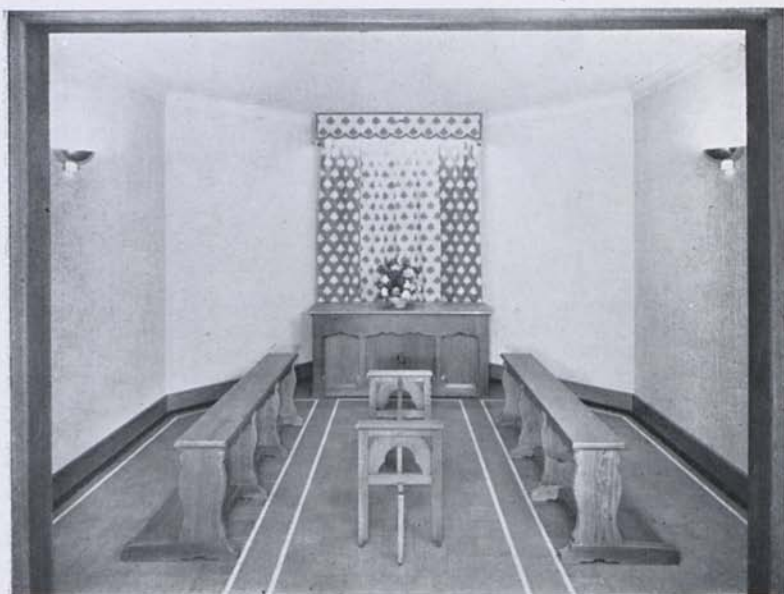
*To the greater glory of God and for the comfort of His people, we do hereby dedicate and set apart this House to be alike a hallowed resting place for the earthly bodies of our beloved dead; and also a place of quiet and tranquillity for those who mourn.*

With these words the Bishop of Ripon (Dr. G. C. L. Lunt) assisted by the President of the Leeds Free Church Council (Rev. Chas. T. Bishell), dedicated the Chapel of Rest at Lawns Wood, on Saturday, 21st October, 1939.

The tendency for people to live in flats and houses of limited accommodation; the increased use of nursing homes and hospitals and the long distances that people oft-times wish to bring their dead for interment or cremation, present relatives with the difficult problem of where their deceased loved ones may rest between the time of passing and the carrying out of the last rites.



WAITING ROOM.



CHAPEL OF REST.

The Chapel of Rest, with its atmosphere of repose and peace—situated in nature's garden of trees and flowers, amidst the songs of birds—provides the necessary facilities.

Every provision has been made for comfort, including waiting and toilet rooms, in the newly-erected building which houses this sanctuary.

Relatives may visit the Chapel of Rest for meditation during the period of waiting after reception.

*Further information and full particulars may be obtained from the Office of*

*The Superintendent Registrar,  
Laxens Wood Cemetery and Crematorium,  
Adel, Leeds 6.*



THE END

Faint, illegible text, possibly bleed-through from the reverse side of the page. The text is arranged in several lines and is difficult to decipher due to its low contrast and blurriness.

L614.62

1

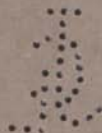
Metropolitan Borough of Islington



CREMATORIUM  
and  
Garden of Remembrance

*Islington Cemetery,  
East Finchley.*

*Instructions,  
Scale of Charges,  
and General Information*





Metropolitan Borough of Islington



CREMATORIUM  
and  
Garden of Remembrance

*Cemetery Superintendent  
and Registrar,  
Islington Cemetery,  
East Finchley, N.2*

*Clerk to the Crematorium  
Department,  
Town Hall,  
Upper Street, N.1*

*Medical Referee,  
Town Hall,  
Upper Street, N.1*



THE CREMATORIUM.

## Description of the Crematorium.

THE Crematorium, which is situated in High View Road in the Islington Cemetery at East Finchley, comprises a Chapel, approached from a wide, open vestibule, with a waiting room and vestry on one side of the entrance and a Columbarium on the other.

THE building is constructed of hard red bricks, with Portland stone facings, and the entrance is entirely in Portland stone. The ceiling of the Chapel is panelled and enriched and has a centrally lighted glass dome. The Chapel provides seating accommodation for 150 persons and the chairs and litany desk are of polished oak.

THE catafalque, upon which the coffin rests during the service, faces the entrance to the Chapel, and is constructed in bronze, suitably enriched, on a marble base. At the head of the catafalque ornamental bronze sliding doors, surmounted by an arched surround constructed in stone, have been provided giving a pleasing and harmonious effect to the arrangements.

A TWO manual electro-pneumatic organ is installed and is attuned and regulated to suit the acoustics of the building.

THE Columbarium, in which niches of varying size are fitted, is entered through bronze gates from the Chapel and by a side entrance from the Garden of Remembrance. The floor is paved with marble mosaic.

THE waiting room, which is available for relatives and friends attending a cremation, is suitably furnished, as also is the vestry provided for the use of the officiating minister.

ELECTRIC lighting, with fittings that harmonise with the surroundings, has been installed throughout the building. Hot water radiators with adequate ventilation have been provided.

PERMISSION may be obtained to inspect the Crematorium when no cremation is proceeding, between the hours of 10 a.m. and 4 p.m. on Monday to Friday, and 10 a.m. to 12 noon on Saturday on application being made to the Cemetery Superintendent and Registrar. (Christmas Day, Good Friday and Bank Holidays excepted).

### Garden of Remembrance.

**I**N conformity with the growing practice of dispersing the ashes after cremation a Garden of Remembrance is laid out in the grounds adjoining the Crematorium.

**I**T is arranged in two parts, one on each side of the carriage drive leading to the main entrance of the building. One side is laid out with crazy paving, and beds to receive bedding-out plants have been formed, with a circular path giving access thereto. On the other side a large area of elliptical shape is reserved as a lawn on which cremated remains may be scattered if so desired. Here on seats which are provided, relatives, friends and visitors may rest in quietness and seclusion, for the Garden is well screened from the Cemetery by the trees and large shrubs which are planted around it.

### Instructions for Arranging a Cremation.

**I**N cases where cremation is intended application should be made to the Clerk, Cemetery and Crematorium Department, Town Hall, Upper Street, N.1, who will send full instructions and give all possible assistance.

**T**HE undertaker should be notified and instructed to prepare a suitable coffin.

**I**T must be noted that it is not lawful to cremate the remains of any person who is known to have left a written direction to the contrary, nor human remains which have not been identified.

CREMATION must be conducted strictly in accordance with the Cremation Regulations, dated 28th October, 1930, made by the Secretary of State for the Home Department under Section 7 of the Cremation Act, 1902, and Section 10 of the Births and Deaths Registration Act, 1926, and in accordance with all rules and regulations made by the Council.

NO cremation can be allowed until the death has been registered except where an inquest has been held and a certificate given by the Coroner. Application for cremation must be made on form (A) and the medical certificates on forms (B) and (C) should be obtained as soon as possible. These forms, which may be obtained from the Council or any undertaker, are prescribed by the Regulations made by the Home Secretary under Section 7 of the Cremation Act, 1902.

FORM (A) has to be signed and the statutory declaration contained therein made by an executor or the nearest surviving relative whenever practicable, but it may be done by any other person who can give a satisfactory reason why the application is not made by an executor or the nearest surviving relative.

FORM (B) is the certificate relative to the cause of death to be given by the doctor who attended the deceased in the last illness.

FORM (C) is the certificate confirming the certificate given in form (B) and must be given by a registered medical practitioner of not less than five years standing who shall not be a relative of the deceased or a relative or partner of the doctor who has given the certificate in form (B).

WHEN a Coroner's inquest has been held a certificate in form (E) must be given by the Coroner in lieu of the medical certificates (B) and (C).

ALL papers dealing with cremation are treated as confidential.

## Funeral Service and Procedure at the Crematorium.

THE Chapel at the Crematorium is available for any form of service or ceremony, religious or secular, desired by relatives of the deceased.

CHURCH of England and Nonconformist Ministers are available for conducting services in the Chapel, but any person appointed by the relatives of the deceased may officiate at the service, if desired.

THE organ and an organist are available at moderate charges.

AT the conclusion of the service the coffin slowly passes through the bronze gates at the head of the Catafalque to the receiving chamber. The subsequent transference to the incinerating chamber may be viewed by two responsible relatives of the deceased, if desired, but no inspection of the actual process of cremation can be permitted.

CREMATION occupies just under two hours and the ashes are then placed in a numbered urn and disposed of as arranged.

## Disposal of Ashes.

URNS of approved design and material having either a glazed or polished surface (wood not allowed) may be placed in niches in the Columbarium which is attached to the Crematorium. The prices of these niches vary according to size and position and will be the subject of a formal Grant. Any fitment to a niche or any inscription on such fitment or on any urn exposed to view shall be subject to the approval of the Council. The responsible person should be satisfied that the size of the urn is suitable for the particular niche selected.



THE CATAFALQUE.

ON payment of the prescribed fee the ashes may be scattered over the Garden of Remembrance.

THE ashes may be taken away by the person authorising the cremation. Failing instructions as to the disposal of ashes within one month of cremation they will be disposed of as the Council may determine.

THE Council will be prepared to consider the acceptance of gifts as memorials suitable for incorporation into the Crematorium, Columbarium or Garden of Remembrance.

## Fees for Cremation.

| FOR the cremation of the remains of :  |  |  |  |  |  |  |  |  |  | £  | s. | d. |
|--|--|--|--|--|--|--|--|--|--|----|----|----|
| (a) A person whose age at the time of death did not exceed 10 years—                   |  |  |  |  |  |  |  |  |  |    |    |    |
| (i) If cremation takes place within a period of 3 hours of a previous cremation ... .. |  |  |  |  |  |  |  |  |  | 2  | 2  | 0  |
| (ii) If at any other time ... ..   |  |  |  |  |  |  |  |  |  | 3  | 13 | 6  |
| (b) A person whose age at the time of death exceeded 10 years ... ..                   |  |  |  |  |  |  |  |  |  | 3  | 13 | 6  |
| Medical Referee's fee ... ..   |  |  |  |  |  |  |  |  |  | 10 | 6  |    |
| Clergy fee ... ..  |  |  |  |  |  |  |  |  |  | 4  | 0  |    |
| Use of organ ... ..  |  |  |  |  |  |  |  |  |  | 10 | 6  |    |
| Organist's fee ... ..  |  |  |  |  |  |  |  |  |  | 1  | 1  | 0  |
| Dispersal of ashes ... ..  |  |  |  |  |  |  |  |  |  | 10 | 6  |    |



## Fees for Niches in Columbarium.

(a) For the exclusive right of user, including the first deposit—

(i) in a single niche ... ..

(ii) in a double niche ... ..

| BAYS A, B, C, D <sup>1</sup> and D <sup>2</sup> . |    |    |            |    |    |               |    |    |
|---|----|----|------------|----|----|---------------|----|----|
| Rows 1, 2, 8 & 9                                  |    |    | Rows 3 & 7 |    |    | Rows 4, 5 & 6 |    |    |
| £   | s. | d. | £          | s. | d. | £             | s. | d. |
| 3   | 3  | 0  | 4          | 4  | 0  | 6             | 6  | 0  |
| 6   | 6  | 0  | 8          | 8  | 0  | 12            | 12 | 0  |

(b) For any deposit after the first in any niche ... .. 10 6

Fee for entry of Grant of purchase of a niche, including stamp duty ... .. 5 0

*All fees or charges are payable in advance. Cheques should be made payable to the Islington Borough Council and crossed "National Provincial Bank, Ltd."*

## Regulations.

CREMATION must be conducted strictly in accordance with the Cremation Regulations, dated October 28th, 1930, made by the Secretary of State for the Home Department under Section 7 of the Cremation Act, 1902, and Section 10 of the Births and Deaths Registration Act, 1926.

1. APPLICATION for cremation must be made to the Clerk, Cemetery and Crematorium Department, Town Hall, Upper Street, N.1, between the hours of 10 a.m. and 4 p.m. on weekdays and 10 a.m. and 1 p.m. on Saturdays, at least 48 hours before the proposed hour of cremation.

CREMATIONS may take place between the hours of 10 a.m. and 3 p.m. on Monday to Friday (Christmas Day, Good Friday and Bank Holidays excepted).

THE instructions to undertakers must be strictly adhered to.

2. THE application on form (A) must be signed and the statutory declaration made by an executor or by the nearest surviving relative of the deceased or if made by any other person must show a satisfactory reason why the application is not made by an executor or by the nearest surviving relative. In cases where an inquest has been held or a post mortem examination has been made in pursuance of section 21 (1) of the Coroners (Amendment) Act, 1926, a certificate given by a Coroner in form (E) must be produced. In other cases the application must be accompanied by a duly certified copy of the Registrar's Certificate for disposal or a certificate given in pursuance of section 2 (2) of the Births and Deaths Registration Act, 1926, that the death of the deceased is not required by law to be registered in England or a duplicate which has been duly issued in pursuance of section 2 (4) of the Act of 1926.

3. NO cremation shall be allowed to take place unless—

(a) A CERTIFICATE in form (B) has been given by a registered medical practitioner who has attended the deceased during his or her last illness and who can certify definitely as to the cause of death and a confirmatory medical certificate in form (C) has been given by another medical practitioner. The certificate in form (C) if not given by the Medical Referee must be given by a registered medical practitioner of not less than five years standing, who shall not be a relative of the deceased or a relative or partner of the doctor who has given the certificate in form (B); or

(b) A POST MORTEM examination has been made by a medical practitioner expert in

pathology appointed by the Council as the Cremation Authority (or in the case of emergency appointed by the Medical Referee) and a certificate given by him in form (D) ; or

(c) A POST MORTEM examination has been made and the cause of death has been certified by the Coroner under section 21 (2) of the Coroners (Amendment) Act, 1926, and a certificate given by him in form (E) ; or

(d) AN inquest has been held and a certificate has been given by the Coroner in form (E), provided that in any case in which the death occurs in connection with an industrial, railway, flying or road accident, and the Coroner adjourns the inquest with a view to the investigation of the causes of the accident he may give a certificate in form (E) with the necessary modifications if he is satisfied that death was due to an accident without waiting for the termination of the inquest.

NO cremation shall take place except upon the written authority of the Medical Referee.

4. THE Medical Referee will, before allowing the cremation, examine the application and certificates and ascertain that they are such as are required by the Regulations made by His Majesty's Secretary of State and that the inquiry made by the persons giving the certificates has been adequate. He may make any inquiry with regard to the application and certificates that he thinks necessary.

5. IF it appears that death has been due to poison, to violence, to any illegal operation or to privation or neglect, or if there is any suspicious circumstance whatsoever, whether revealed in the certificate or otherwise, coming to his knowledge, the Medical Referee shall decline to allow the cremation unless an inquest be held and a certificate be given by the Coroner in form (E).

PROVIDED that if in any case to which the foregoing rule applies it is shown to the satisfaction of the Secretary of State that by reason of any special circumstances it is impracticable or undesirable that an inquest shall be held, he may by order under his hand authorise the Medical Referee to allow the cremation without an inquest being held and certificate given by the Coroner.

6. THE Medical Referee may in any case decline to allow a cremation without stating any reason.

7. THE remains of any person who is known to have left a written direction to the contrary cannot be cremated, nor any human remains which have not been identified.

8. THE foregoing regulations 2 to 7 shall not apply to the cremation of the remains of a deceased person who has already been buried for not less than one year. Such remains may be cremated, subject to such conditions as the Secretary of State may impose in the exhumation licence granted by him or otherwise ; and such cremation in which those conditions are not observed shall be deemed a contravention of these regulations.

9. NOTWITHSTANDING the foregoing regulations, the Medical Referee may permit the cremation of the remains of a still-born child if it be certified to be still-born by a registered medical practitioner after examination of the body, and if the Medical Referee, after such enquiries as he may think necessary, be satisfied that it was still-born and that there is no reason for further examination, but before permitting such cremation the Medical Referee shall, except where an inquest has been held and a certificate given by a Coroner in form (E), require the production of a certificate in pursuance of section 7 (4) of the Births and Deaths Registration Act, 1926, that the still-birth has been duly registered.

10. IN the case of any person dying of plague, cholera, or yellow fever on board ship or in a hospital or temporary place of reception of the sick provided by a Port or other Local Authority

under the Public Health Acts, or by a Hospital Committee under the Isolation Hospital Acts, the Medical Referee, if satisfied as to the cause of death, may dispense with any of the requirements of these regulations.

11. IN the case of the remains of a person who has died in any place out of England the Medical Referee may accept a Declaration containing the particulars prescribed in form (A) if it be made before any person having authority in that place to administer an oath or take a declaration ; and he may accept certificates in forms (B), (C) and (D), if they be signed by any medical practitioners who are shown to his satisfaction to possess qualifications substantially equivalent to those prescribed in the case of each certificate by these regulations.

IN any such case the Secretary of State, if satisfied that the case is one in which cremation may properly take place, may by order under his hand authorise the Medical Referee to allow the cremation without the production of forms (B) and (C).

12. ANY Service or Demonstration in connection with a funeral shall be subject in all things to the control of the Council as the Burial and Cremation Authority.

13. ALL persons admitted into the Crematorium shall be subject to the regulations of the Burial and Cremation Authority, and the Cemetery Superintendent and Registrar shall have full power to exclude or remove from the Crematorium any member of the public whom he, in his discretion, may think fit so to exclude or remove. All persons attending the service are expected to leave the Chapel after the conclusion of the ceremony.

TOWN HALL,  
UPPER STREET, N.I.  
*Adopted October, 1937.*

W. ERIC ADAMS,  
*Town Clerk and Clerk to the Council acting  
as the Burial and Cremation Authority.*

## Special Conditions attaching to the Grant of Right of User of a Niche in the Columbarium.

1. **T**HE rights under the grant shall cease and determine in the event of the Crematorium being permanently closed in accordance with any Regulations made by the Secretary of State or other competent Authority or in the event of its ceasing to exist. In the absence of any special arrangement which the Council may be able to make with the owner so far as such person is known to the Council for the burial or preservation of the ashes of the deceased person contained in an urn or casket the Council may in their absolute discretion cause the same to be decently interred in a burial ground or in the land adjoining the Crematorium reserved for the burial of ashes or scattered thereon.

2. THE urn or casket shall be maintained by and at the sole expense of the owner in good condition to the satisfaction of the Council and shall remain in the niche or recess entirely at the sole risk and responsibility of the owner. The Council shall be under no obligation or undertake any responsibility in any way therefor and any loss or injury sustained by the owner caused by or arising out of any storm, tempest, force majeure, act of God, theft, burglary, or otherwise howsoever, shall not be the subject of any claim against the Council.

3. THE right to maintain the urn or casket shall not be deemed to include the right to place in the niche or recess any flowers or vases containing flowers or any other article whatsoever.

4. THE urn or casket shall not be removed from the niche or recess without the written

approval of the Council first obtained and then only subject to such conditions and restrictions as the Council might think fit to impose as a condition of granting such approval.

5. THE grant shall also cease and determine in the event of there being any breach or non-observance of these conditions whether on the part of the owner or any person acting on his behalf.

6. THE owner shall not assign the grant or any rights granted thereby without the written consent of the Council first obtained.

## Instructions to Undertakers.

COMMUNICATIONS, either personally or by letter, must be made to the Clerk, Cemetery and Crematorium Department, Town Hall, Upper Street, N.I.

COFFINS for cremation should be made of some readily combustible wood, such as American white, or thin pine, not more than half an inch thick. ENGLISH ELM SHOULD NEVER BE USED. Oak may be used, though it is not recommended, and when it is used the boards should be made as thin as possible, and well seasoned and dry, fastened together with wooden pegs.

COFFINS MUST NOT HAVE CROSS PIECES UNDER THE SOLE OR ON THE BOTTOM AS THESE HAVE TO BE REMOVED BEFORE THE COFFIN CAN ENTER THE INCINERATING CHAMBER: no objection will be taken to strips placed lengthwise to strengthen the bottom of the coffin.

COFFINS must not be painted or varnished but may be covered with a thin woollen material of white, black or purple cloth. There is no objection to the coffin being polished.

THE use of brass or metal nails, handles or ornaments of any kind should be avoided as they must be removed before the coffin is placed in the incinerating chamber.

SAWDUST must not on any account be placed in the coffin and pitch must not be used for coating the inside.

THE Cremation Authority will not cremate a body in a lead or iron coffin.

IF it is desired a thin zinc lining may be inserted inside the coffin, but under no circumstances will any other metal be allowed for this purpose.

THE extreme outside dimensions allowed for a coffin are as follows :—

|        |     |     |                   |
|--------|-----|-----|-------------------|
| Length | ... | ... | 7 feet 4 inches.  |
| Width  | ... | ... | 2 feet 3 inches.  |
| Depth  | ... | ... | 1 foot 10 inches. |

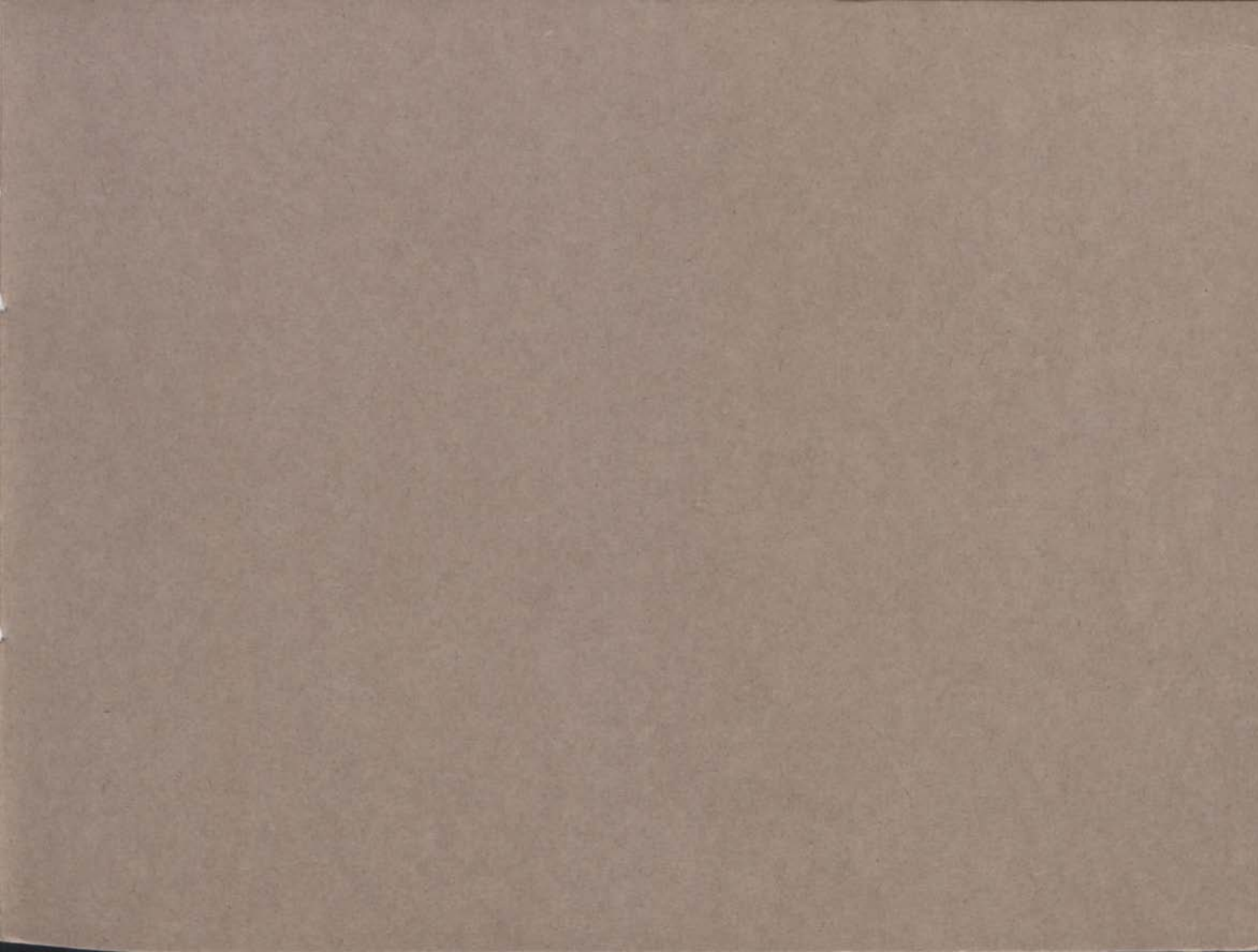
THE hours of the day during which cremation may take place are between 10 a.m. and 3 p.m. on Monday to Friday (Christmas Day, Good Friday and Bank Holidays excepted):

SPECIAL arrangements may be made for cremation at other hours.

UNDERTAKERS must always provide at least four bearers for carrying the coffin into the Chapel and depositing it on the catafalque.

THE Superintendent of the Cemetery is instructed to see that the regulations are strictly observed before allowing the cremation to proceed.





---

VAIL & CO. LTD.,  
PRINTERS,  
LONDON, E.C.1

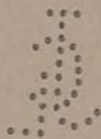
---

L614.62  
1



KENSAL GREEN  
CREMATORIUM  
AND GARDENS  
OF REMEMBRANCE





# KENSAL GREEN CREMATORIUM

authorized by Act of Parliament, 1 Edw. 8, and 1 Geo. 6.

## DIRECTORS

J. D. HARDY, CHAIRMAN  
F. WILLIS, DEPUTY CHAIRMAN  
W. B. PATON, F.C.A.  
A. K. GLOVER.  
F. C. FREEMAN, P.A.S.I.

## CLERK TO THE COMPANY

FREDK. V. HOAR.

## CHAPLAINS

Rev. B. C. H. ANDREWS, M.A.  
Rev. E. H. PITTWOOD (FREE CHURCH)

## SUPERINTENDENT

H. T. E. HALL.

## MEDICAL REFEREES

JAMES FENTON, C.B.E., M.D., M.R.C.P., D.P.H.  
CHARLES P. HAY, M.D., M.R.C.P., D.P.H.

Offices • **GENERAL CEMETERY COMPANY**  
**KENSAL GREEN CEMETERY, HARROW ROAD**  
**LONDON, W.10**

Telephone: LADBROKE 0152 (2 lines).

MORS JANUA VITÆ



**THE** modern and imposing KENSAL GREEN CREMATORIUM recently built for the General Cemetery Company to the design of the well-known architect, G. Berkeley Wills, F.R.I.B.A., occupies a spacious site at the western end of the Company's very extensive grounds at Kensal Green, and is situate apart from any other buildings in the grounds.

The Crematorium consists of two Chapels with waiting and retiring rooms, and cremation halls in which have been installed the latest improved transformers.

At the rear of the Chapels are Columbaria with niches for the reception of urns or caskets containing the ashes.

Between the two Chapels is a glass-domed and pillared court with pool and fountain in the centre, which affords adequate protection for flowers and wreaths in inclement weather. The Chapels can be used for the services of any religious denomination. Provision for music at the services has been made.

At the southern end of the Crematorium a Garden of Memory has been laid out, the design of Edward White, V.M.H., with lawns, flower beds, ornamental trees and shrubs. Here the ashes may be scattered, and tablets in remembrance placed on the walls enclosing the garden or in the garden itself.

When required, this garden will be enclosed by extensive Cloisters and additional Columbaria.

Facing the front of the Crematorium, and approached by grass terraces, is another and larger Garden of Memory where small plots may be purchased for the interment of urns or caskets containing ashes, or for scattering ashes.

In the peaceful surroundings of these beautiful gardens quiet and seclusion will be found.

## **HISTORICAL NOTE**

The Crematorium and Gardens of Memory are in the grounds of Kensal Green Cemetery.

Kensal Green Cemetery, known throughout the world, was the first and is the largest Cemetery in the County of London, and was authorized by Act of Parliament (2 and 3 William IV in 1832) to meet the public need due to the closing of the Parish Churchyards. The Cemetery was visited several times by Queen Victoria and by King Edward VII.

It contains in its grounds the tombs of several members of the Royal Family, and it is interesting to note that Kensal Green is the only Public Cemetery in the country chosen for this purpose.

There are also many fine and interesting monuments erected to the memory of world-famous people.

With the growing demand for Cremation the Company decided to employ a portion of its unutilized land in which to erect a Crematorium. A site in the north-west portion of its spacious grounds has been selected for the purpose, covering an area of between 4 and 5 acres.

Access to the Crematorium is through the western entrance to the grounds about three-quarters of a mile up the Harrow Road from the main entrance. The Crematorium is easily reached from any part of London. For full details see page 9.

## **SOME ADVANTAGES OF CREMATION**

It affords complete disposition of the dead in a short time and in a hygienic manner. It avoids the expense of costly memorial stones on graves which need to be kept in order and repair.





APPROACH AND ENTRANCE TO  
CREMATORIUM AND CHAPELS

Before Cremation the enquiry is of a searching and thorough nature. Three doctors must give their certificates, two of whom must view the body after death. These precautions obviate the possibility of being buried alive and of foul play.

It is easily arranged for, and any religious service can be held.

It enables the continued use of family graves in which there is no more room for coffins.

It is carried out at small expense, the entire cost at the Kensal Green Crematorium being as low as £4 6s. 6d.

## HOW TO ARRANGE FOR A CREMATION

When a Cremation is desired an undertaker should be immediately informed, and instructed to prepare a suitable coffin.

Notice should be given as early as possible at the Office of the Company at Kensal Green stating the day and hour it is desired it should take place.

It is not lawful to cremate the remains of any person who is known to have left a written direction to the contrary, nor those of any person which have not been identified.

No Cremation can be allowed until the death has been registered, except when an inquest has been held and a certificate given by the Coroner.

Forms of application for a Cremation (Form A) and the requisite medical certificates (Forms B and C) should be obtained as soon as possible from the Office of the Company or from the undertaker. There is no charge for these forms.

**Form A** has to be signed and the Statutory Declaration comprised therein made by an Executor or the nearest surviving relative whenever practicable, but it may be done by any other person who can give a satisfactory reason why the application is not made by an executor or the nearest surviving relative.

**Form B** is the certificate relative to the cause of death to be given by the doctor who attended the deceased in the last illness.

**Form C** is the certificate confirming the last (Form B), and must, if not given by the Medical Referee, be given by a second doctor of not less than five years standing, who shall not be a relative of the deceased or a relative or partner of the first doctor who has given the certificate in Form B.

In the event of difficulty being experienced in finding at short notice a doctor who is properly qualified as above, the Company will make a special appointment for the occasion.

INTERIOR OF A CHAPEL



When a Coroner's Inquest has been held, a certificate in Form E will be given by the Coroner in place of the Medical Certificates B and C.

When completed, the Forms, together with the Registrar's Certificate of Death, should be forwarded under cover, addressed:—

“The Medical Referee,

c/o Kensal Green Crematorium, Harrow Road, Kensal Green, W.10.”

All certificates must be obtained at the expense of the applicant. Printed forms will be supplied free by the Company or the undertaker.

ANY COMPETENT UNDERTAKER WILL ATTEND TO THESE FORMS OR ADVISE ON THE PROCEDURE.

All papers dealing with Cremation are treated as confidential.

Cremations may take place on any weekday, except Saturday, between the hours of 9 a.m. and 5 p.m., but special arrangements can be made for a Cremation at any other time. Saturdays, between 9 a.m. and 12 noon.

It should be borne in mind that it is the undertaker and not the Cremation Authorities who carry out all the funeral arrangements until the coffin is placed on the Catafalque and given into the Company's care.

## **MEANS OF ACCESS**

KENSAL GREEN CREMATORIUM is easily reached from any part of London.

The nearest Railway Station is KENSAL GREEN, Harrow Road, on the Bakerloo Underground line which connects with any Underground station and the principal London termini.

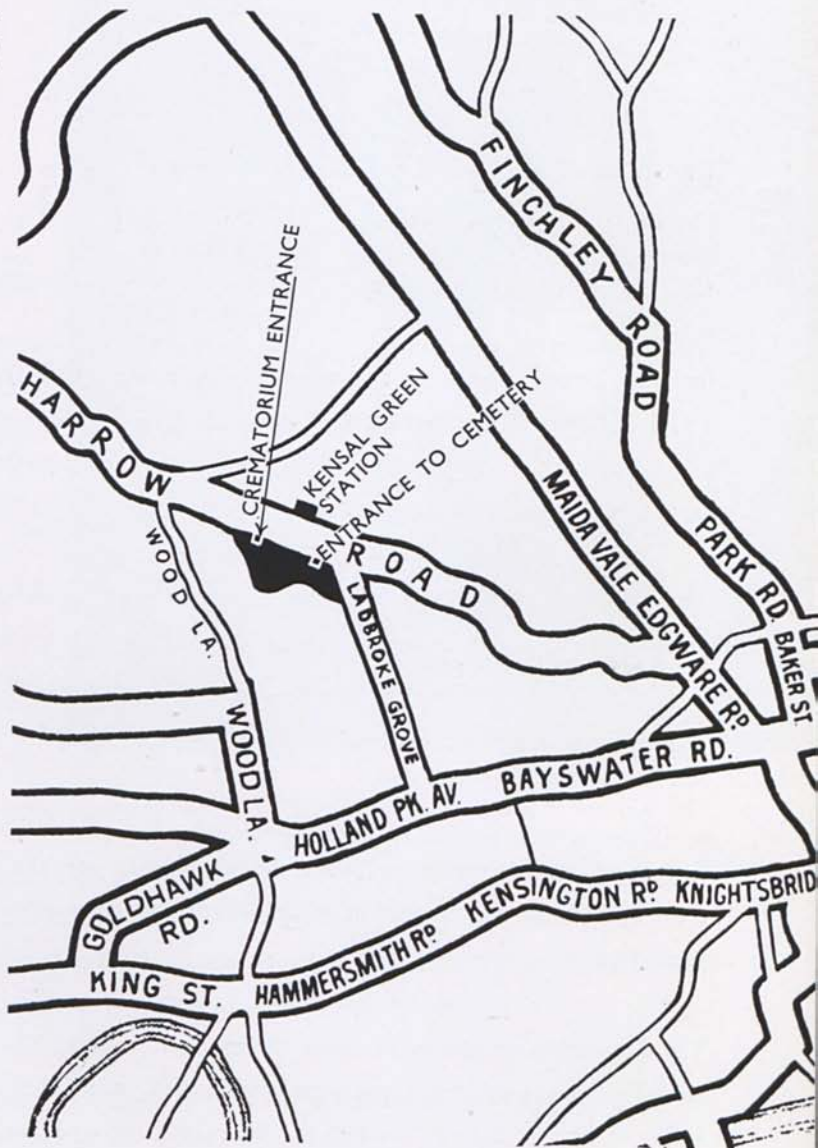
The following Buses pass the entrance:—

No. 18 from London Bridge station, via Euston Road, Marylebone Road and Edgware Road, also

Nos. 662 and 664 trolley buses from Paddington Green.

Nos. 46 and 52 (Mill Hill) from Victoria to Kensal Green (Kilburn Lane); change to trolley bus.

MAP SHOWING SITUATION OF  
CREMATORIUM—Carriages enter by  
WEST GATE indicated by ARROW



## **PROCEDURE AT THE CREMATORIUM**

CREMATIONS can take place on any day, as previously detailed.

The time arranged must be that at which the funeral is to arrive at the Crematorium, and it is most essential that the time fixed should be punctually observed. An additional charge will be incurred to cover any extra expense the Company may be put to owing to unpunctuality.

Chapels are available for services according to the Church of England or any other denomination, which services may be taken either by a clergyman chosen by the relatives of the deceased, or by the Company's own chaplains. In either case early notice must be given to the Company stating whether Church of England or Nonconformist service is required.

If desired, a representative of the deceased may see the coffin passed into the transformer, but no inspection of the process of cremation can on any account be permitted.

The Cremation usually takes about an hour, after which the ashes are gathered up, placed in an urn or casket and afterwards sealed, when they may be either placed in a Columbarium, buried, handed to the person who authorized the Cremation, or

VIEW OF FOUNTAIN COURT  
FROM TERRACE WALK

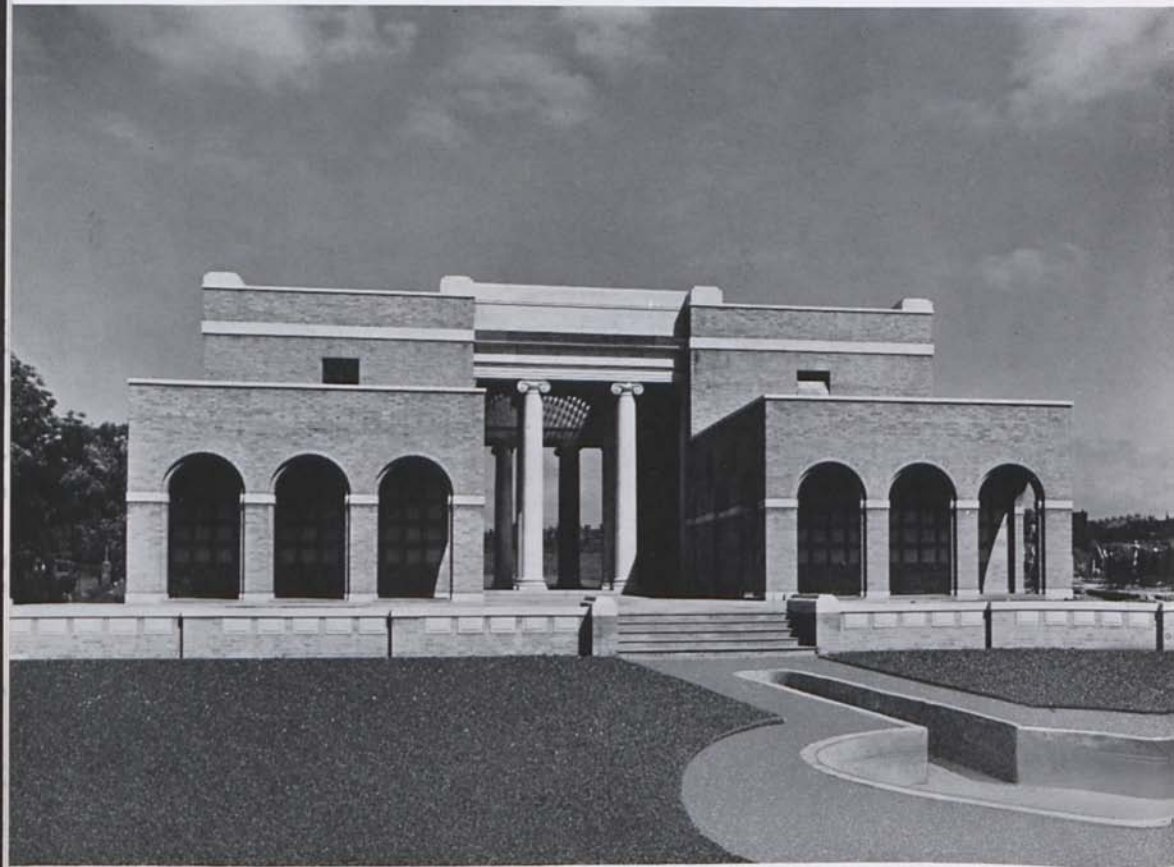


otherwise disposed of according to arrangement. A selection of urns may be inspected at the Crematorium.

The deceased must be brought to the Crematorium in a suitable coffin. If any change should be necessary it cannot be made at the Crematorium.

In no case will the Company open, or permit to be opened, a coffin for any purpose whatsoever after it has been given into their hands.

GENERAL VIEW OF CREMATORIUM FROM "GARDEN  
OF REMEMBRANCE," SHOWING COLUMBARIA





## REMARKS WHICH SHOULD BE NOTED

Persons who desire to be cremated at death should, in order to ensure this being carried out, express their wishes in writing or otherwise to their executors, relatives or friends.

To express such wishes or directions in a will gives no guarantee that the instructions will be carried out, as in many cases the contents of a will are not known until after the funeral has taken place.

The form, "DIRECTION FOR CREMATION AT DEATH," herewith should be completed and signed and left available. Draft form herewith.

Cremated remains can be interred in family graves, including those which have already ceased to have room in them for additional coffins.

A reduction is made in the ordinary burial fees when cremated remains are interred in a grave.

A reduction is also made in the charge for Cremation to all persons insured under the National Health Insurance Acts or those immediately dependent upon them. The insured person's fully stamped card must in all cases be produced.

## **DIRECTIONS TO UNDERTAKERS**

It is recommended that coffins should be made of some readily combustible wood, such as canary wood, white wood, Canadian elm, or thin pine. As few nails as possible should be used, wooden pegs being sufficient and preferable.

If the materials of the coffin are in any way unsuitable the Superintendent is authorized either to decline the Cremation, or else to make an extra charge to cover the additional expense he considers will be incurred to cremate.

The outside dimensions of the coffin must not exceed 7 feet in length, 20 inches in depth, and 30 inches in width.

No metal of any kind must be used, other than zinc, and no sawdust or pitch may be put inside the coffin. It may be polished if desired, but not painted or varnished, and any metal fittings must be attached so as to be easily removed, which is necessary before Cremation.

Undertakers must provide the requisite number of bearers for carrying the coffin into the Chapel and placing it on the Catafalque.

It is advisable that copies of the necessary Forms, which are supplied by the Company free of charge, be kept in stock.

## SCALE OF CHARGES

### CREMATION, DISPOSAL OF ASHES, ETC.

|  | £ s. d. |
|--|---------|
| For a Cremation including the use of the Chapel and the Waiting Room   | 5 5 0   |
| For a Cremation before 10 a.m. . . . .   | 4 4 0   |
| Cremation charge for all persons under the National Health Insurance Acts or those immediately dependent upon them (at usual times)  | 4 4 0   |
| For a life member of the Cremation Society of Great Britain (including service and disposal) . . . . .                               | 5 5 0   |
| For a person insured under the Assurance Scheme of the Cremation Society of Great Britain (including service and disposal) . . . . . | 4 14 6  |
| For a Cremation of a stillborn infant (following a previous Cremation only) . . . . .  | 1 1 0   |
| For a Cremation of a child under 5 years (following a previous Cremation only) . . . . .   | 2 10 0  |
| For a Cremation of a child over 5 and under 10 years . . . . .   | 3 3 0   |
| For a Cremation only where the ashes are to be buried in a private grave in Kensal Green Cemetery . . . . .                          | 4 4 0   |
| Services of Chaplain (if desired) in all cases . . . . .   | 10 6    |
| Service with special music . . . . .   | 1 1 0   |

(When a complete service is carried out in the Chapel the usual music is provided without additional charge.)

|  | £  | s. | d. |
|--|----|----|----|
| Decoration of Chapel with palms, etc. . . . . from   | 3  | 3  | 0  |
| Fees for burial of ashes in a private grave . . . . . from   | 5  | 5  | 0  |
| Reduction of ashes to fine particles and dispersing in the "Garden of Memory" . . . . .  |    | 15 | 0  |
| Rose tree planted with ashes under . . . . .   | 1  | 15 | 0  |
| Ashes deposited under a tree . . . . .   | 1  | 0  | 0  |
| Cinerary urns or caskets according to pattern . . . . . from   | 15 |    | 0  |
| Deposit of urn in public vault . . . . .   | 2  | 12 | 6  |
| Deposit of urn in the Monumental Chambers at the Cemetery Church for a period of 25 years (one-third extra for each 25 years) . from | 5  | 5  | 0  |
| For a compartment in the Columbarium at the Crematorium for a period of 25 years (one-third extra for each 25 years) . . . from      | 21 | 0  | 0  |
| Entry on Recordia, including inscription free of charge up to 50 letters .   | 6  | 6  | 0  |
| Fee on removal of urn from a compartment . . . . .   | 2  | 2  | 0  |
| Temporary deposit of urns after the first month, per month (payable in advance) . . . . .  |    | 10 | 0  |

NOTE.—If any such payment be in arrears beyond 21 days the Company reserve the right of disposing of the ashes as they think fit.

Memorial tablets in special positions by arrangement with the Company.

|   |   |   |  |
|---|---|---|--|
| Certificate of Cremation . . . . .                                | 3 | 7 |  |
| For supplying Certificate required by Registrar-General . . . . . | 2 | 6 |  |

All fees to be paid in advance at the Office of the Company.

THE KENSAL GREEN CREMATORIUM

GENERAL CEMETERY COMPANY

KENSAL GREEN CEMETERY, HARROW ROAD

KENSAL GREEN, LONDON, W.10

**DIRECTION FOR CREMATION AT DEATH**

I hereby place on record my earnest desire that my body shall be cremated after death, at the **KENSAL GREEN CREMATORIUM, HARROW ROAD, KENSAL GREEN, LONDON, W.10.**

SIGNATURE \_\_\_\_\_

FULL NAME (*Title, Mr., Mrs., or Miss*) \_\_\_\_\_

\_\_\_\_\_

*block letters*

ADDRESS \_\_\_\_\_

DATE \_\_\_\_\_

*It is important that this desire should be made known to the Executors and nearest relatives, and not merely inserted in a will otherwise it might not become known till after the funeral.*



